



## Bettis™ VOS-PAC

Preset, Pre-Designed, Pre-Engineered Actuation Package



[www.globalsupplyline.com.au](http://www.globalsupplyline.com.au)



Approved Emerson-Bettis distributor, service facility and stockist.  
[www.globalsupplyline.com.au](http://www.globalsupplyline.com.au) [sales@globalsupplyline.com.au](mailto:sales@globalsupplyline.com.au)  
Full stock list [click here](#)



# Table of Contents

<b>Section 1</b>	<b>What is Your VOS-PAC Number?.....</b>	<b>3-10</b>
	VOS-PAC Overview .....	4
	How to Get Your VOS-PAC Number?.....	5
	Torque Selection Guide.....	6
	Control Type Selection Guide.....	9
<b>Section 2</b>	<b>Step by Step to Your Technical Data.....</b>	<b>11-26</b>
	CBx-Series.....	13
	G-Series.....	17
	RPE-Series.....	23
<b>Section 3</b>	<b>Components and Dimensions.....</b>	<b>27-30</b>
	Electrical Control Component Details .....	28
	Envelope Dimensions and Weights Data.....	29

# SECTION 1

What is Your VOS-PAC Number?

# What is VOS-PAC?

**Valve Operating Systems (VOS™)** are used in almost every energy related industry, including oil and gas transmission, petrochemical and refineries. Other significant markets include chemical, power industry including pulp and paper, food and beverage, pharmaceutical, HVAC and water systems.

Bettis™ VOS-PAC is a pre-engineered and cataloged turnkey solution that includes a pneumatic actuator, air filter regulator, solenoid valve, limit switch, positioner, as well as required hardware.

All related documentation including installation manuals, quick service guides, and drawings are available before you even order.



## 24/7 Online Databook



[www.emerson.com/VOSbyBettis](http://www.emerson.com/VOSbyBettis)

**Instant quotes, pricing and quicker deliveries** are made possible with this standardized package.

Everything the end-user needs to **maintain and operate** their actuation package is accessible in any remote location by easily scanning a QR Code with your unique serial number.

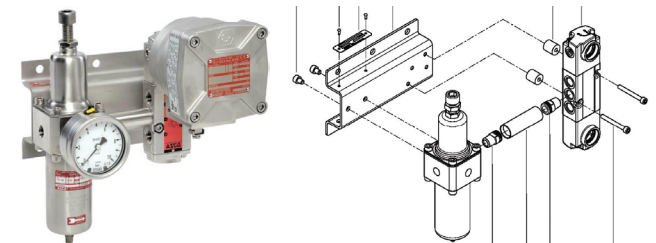
## Why Bettis?



**Engineered** by Bettis  
**Built and Tested** by Bettis  
**Backed** by Bettis

## True Modular Control System

- Fully engineered and tested solution for onshore and offshore services
- Fast configuration, installation and commissioning
- Easy to maintain and repair with standardized design
- Every part can be disassembled and replaced easily by taking off for maintenance and repairs.



# What is Your VOS-PAC number?

SCOTCH YOKE

60psig  
80psig

**Spring Return / Double Acting**

- CBx-Series
- G-Series (Size G01 to G10)

- CONTROL TYPE A** Spring Return - Shutdown for Small Torque Range
- CONTROL TYPE B** Spring Return - Shutdown for Large Torque Range
- CONTROL TYPE C** Spring Return - Shutdown with Smart Positioner
- CONTROL TYPE D** Spring Return - Fast Shutdown through Quick Exhaust Valve
- CONTROL TYPE E** Double Acting - Shutdown for Small Torque Range
- CONTROL TYPE F** Double Acting - Shutdown for Large Torque Range

1/4"  
1/2"  
1/2" Pilot Valve  
1/2" DVC  
1/2" VB  
1/2" DVC

3/4" VB  
1/2" DVC  
1" VB  
1/2" 1/4" QEV  
1/2" 3/4" QEV  
1/2" 1/2" QEV

**STEP 1**

Choose Supply Pressure

**STEP 2**

Select Actuator Model

**STEP 3**

Select Control Type

**STEP 4**

Select Control System Size

**STEP 5**

Approval ATEX / IECEX or UL/FM/CSA

Your VOS-PAC Number

RACK & PINION

60psig  
80psig

**Spring Return / Double Acting**

- RPE-Series (Size 25 to 4000)

- CONTROL TYPE G** Spring Return - Shutdown for Small Torque Range
- CONTROL TYPE H** Spring Return - Shutdown for Large Torque Range
- CONTROL TYPE I** Double Acting - Shutdown

1/4"

**Note:** Configurations can be subjected to some late customization depending on project needs

# Torque Values at 60 psig, G & CBx-Series Actuators

Double Acting Actuator Models							
SN	Model	Inboard (lbf.in) At Max (60 psig)			Outboard (lbf.in) At Max (60 psig)		
		ABTO (lbf.in)	ARTO (lbf.in)	AETO (lbf.in)	ABTC (lbf.in)	ARTC (lbf.in)	AETC (lbf.in)
1	CBB315	997	533	1013	976	533	1035
2	CBB420	2312	1190	2207	2147	1190	2379
3	CBB525	4388	2350	4537	4427	2350	4497
4	CBB725	8874	4721	9113	8953	4721	9033
5	CBA730	10880	5787	11141	10946	5787	11074
6	G01010	20079	10718	20060	20279	10823	20259
7	G2012	35102	18663	35073	35344	18790	35316
8	G3014	51745	27481	51721	52204	27722	52181
9	G3016	68694	36401	68663	69154	36641	69122
10	G4016	83077	44033	83018	83882	44454	83822
11	G4020	132880	70212	132785	133685	70633	133590
12	G5020	170647	90147	170591	172498	91115	172442
13	G5024	250062	131802	249980	251913	132770	251831
14	G5028	353198	186356	353082	355049	187324	354933
15	G7028	431952	228175	431843	434829	229681	434720
16	G8036	850936	448459	850811	856029	451123	855903
17	G8040	1054329	555210	1054174	1059421	557875	1059266
18	G10040	1378540	726154	1378239	1387883	731043	1387580

Spring Return Actuator Models							
SN	Model	Air Torque Output (lbf.in)			Spring Torque (lbf.in) At Max (60 psig)		
		ABTO (lbf.in)	ARTO (lbf.in)	AETO (lbf.in)	ABTC (lbf.in)	ARTC (lbf.in)	AETC (lbf.in)
1	CBB315-SR60(CW)	521	226	327	520	216	303
2	CBB415-SR60 (CW)	1000	419	601	977	416	605
3	CBB420-SR60 (CW)	1336	505	652	1215	494	667
4	CBB520-SR60 (CW)	2095	812	1085	1921	794	1106
5	CBB525-SR60 (CW)	2458	1036	1494	2389	977	1374
6	CBB725-SR60 (CW)	4967	2041	2899	5078	2062	2918
7	CBA730-SR60 (CW)	6456	2607	3618	6406	2541	3478
8	CBA930-SR60 (CW)	11688	4401	5619	11419	4185	5208
9	G01009-SR4 (CW)	4426	2053	2803	11180	5570	9550
10	G01010-SR4 (CW)	9318	4650	7690	11107	5551	9478
11	G01012-SR4 (CW)	17960	9216	16324	10996	5522	9366
12	G2014-SR4 (CW)	24345	11671	19183	21241	9972	16081
13	G3016-SR2 (CW)	29167	12532	17777	47338	22023	35940
14	G3016-SR4 (CW)	37812	17857	29044	36065	16845	27298
15	G4020-SR2 (CW)	58464	22828	29112	97445	43438	68065
16	G4020-SR4 (CW)	78602	36484	59070	67466	30486	47941
17	G5024-SR4 (CW)	143815	61291	86752	152431	65620	95365
18	G5028-SR2 (CW)	204758	84255	111337	226135	95092	132708
19	G5028-SR4 (CW)	243761	113526	186665	150783	64156	93717
20	G7028-SR4 (CW)	226769	86007	107284	305075	127662	185570
21	G7032-SR4 (CW)	357905	156577	238386	304256	127442	184751
22	G8036-SR3 (CW)	458285	202445	311704	503479	225523	356890
23	G10040-SR4 (CW)	732161	278515	314480	1007498	421555	589757

# Torque Values at 80 psig, G & CBx-Series Actuators

Double Acting Actuator Models							
SN	Model	Inboard (lbf.in) At Max (60 psig)			Outboard (lbf.in) At Max (60 psig)		
		ABTO (lbf.in)	ARTO (lbf.in)	AETO (lbf.in)	ABTC (lbf.in)	ARTC (lbf.in)	AETC (lbf.in)
1	CBB315	1357	720	1370	1329	720	1399
2	CBB420	3129	1603	2972	2905	1603	3203
3	CBB525	5929	3161	6103	5981	3161	6049
4	CBB725	11939	6332	12223	12045	6332	12115
5	CBA730	14644	7763	14948	14733	7763	14857
6	G01010	27001	14351	26974	27267	14490	27240
7	G2012	47126	24969	47088	47449	25138	47411
8	G3014	69439	36758	69407	70052	37079	70020
9	G3016	92098	48666	92055	92711	48987	92668
10	G4016	111391	58873	111311	112465	59435	112384
11	G4020	177939	93817	177812	179013	94378	178885
12	G5020	228482	120445	228408	230950	121736	230875
13	G5024	334503	176020	334393	336971	177311	336861
14	G5028	472598	248911	472443	475066	250201	474911
15	G7028	578109	304802	577964	581946	306810	581799
16	G8036	1137870	598806	1137703	1144660	602358	1144492
17	G8040	1409400	741230	1409193	1416190	744782	1415982
18	G10040	1842906	969475	1842503	1855363	975994	1854958

Spring Return Actuator Models							
SN	Model	Air Torque Output (lbf.in)			Spring Torque (lbf.in) At Max (60 psig)		
		ABTO (lbf.in)	ARTO (lbf.in)	AETO (lbf.in)	ABTC (lbf.in)	ARTC (lbf.in)	AETC (lbf.in)
1	CBB315-SR60 (CW)	845	401	662	520	216	303
2	CBB415-SR60 (CW)	1599	733	1192	977	416	605
3	CBB420-SR60 (CW)	2087	893	1355	1215	494	667
4	CBB520-SR60 (CW)	3275	1421	2196	1921	794	1106
6	CBB525-SR60 (CW)	3875	1791	2933	2389	977	1374
8	CBB725-SR60 (CW)	7783	3543	5757	5078	2062	2918
9	CBA730-SR60 (CW)	10017	4509	7219	6406	2541	3478
10	CBA930-SR60 (CW)	17634	7607	11627	11419	4185	5208
11	G01009-SR4 (CW)	9478	4722	7850	11180	5570	9550
12	G01010-SR4 (CW)	16025	8180	14391	11107	5551	9478
13	G01012-SR4 (CW)	27586	14265	25940	10996	5522	9366
14	G2014-SR4 (CW)	38520	19147	33347	21241	9972	16081
15	G3016-SR2 (CW)	51846	24516	40446	47338	22023	35940
16	G3016-SR4 (CW)	60492	29814	51714	36065	16845	27298
17	G4020-SR2 (CW)	102130	46088	72747	97445	43438	68065
18	G4020-SR4 (CW)	122268	59493	102704	67466	30486	47941
19	G5024-SR4 (CW)	225644	104142	168554	152431	65620	95365
20	G5028-SR2 (CW)	320465	144875	227007	226135	95092	132708
21	G5028-SR4 (CW)	359468	174508	302335	150783	64156	93717
22	G7028-SR4 (CW)	368406	161971	248885	305075	127662	185570
23	G7032-SR4 (CW)	543531	254449	423966	304256	127442	184751
24	G8036-SR3 (CW)	736345	349013	589722	503479	225523	356890
25	G10040-SR4 (CW)	1182165	514311	764386	1007498	421555	589757

# Torque Values at 60 and 80 psig, RPE-Series Actuators

Double Acting Actuator Models				
Model	Sizing Pressure (psig)	BTO (lbf.in)	Sizing Pressure (psig)	BTO (lbf.in)
RPED0025-NU00CWALTN-L11SKB-00XX	60	165	80	220
RPED0040-NU00CWALTN-L14SKB-00XX	60	309	80	413
RPED0065-NU00CWALTN-L14SKB-00XX	60	471	80	630
RPED0100-NU00CWALTN-L19SKB-00XX	60	696	80	931
RPED0150-NU00CWALTN-L19SKB-00XX	60	1115	80	1492
RPED0200-NU00CWALTN-L22SKB-00XX	60	1527	80	2042
RPED0350-NU00CWALTN-L27SKB-00XX	60	2653	80	3547
RPED0600-NU00CWALTN-L27SKB-00XX	60	4508	80	6028
RPED0950-NU00CWALTN-L36SKB-00XX	60	6832	80	9137
RPED1600-NU00CWALTN-L46SKB-00XX	60	11449	80	15312
RPED2500-NU00CWALTN-L46SKB-00XX	60	17741	80	23727
RPED4000-NU00CWALTN-Q55SKB-00XX	60	28794	80	38510

Spring Return Actuator Models										
Model	Sizing Pressure (psig)	BTO (lbf.in)	ETO (lbf.in)	BTC (lbf.in)	ETC (lbf.in)	Sizing Pressure (psig)	BTO (lbf.in)	ETO (lbf.in)	BTC (lbf.in)	ETC (lbf.in)
RPES0025-NU30CWALTN-L11SKB-00XX	60	107	67	94	59	80	166	126	94	59
RPES0040-NU30CWALTN-L14SKB-00XX	60	201	128	174	110	80	312	239	174	110
RPES0065-NU30CWALTN-L14SKB-00XX	60	303	188	271	171	80	471	356	271	171
RPES0100-NU30CWALTN-L19SKB-00XX	60	452	287	392	248	80	701	536	392	248
RPES0150-NU30CWALTN-L19SKB-00XX	60	730	464	625	393	80	1129	862	625	393
RPES0200-NU30CWALTN-L22SKB-00XX	60	989	621	867	547	80	1535	1166	867	547
RPES0350-NU30CWALTN-L27SKB-00XX	60	1735	1104	1485	936	80	2683	2052	1485	936
RPES0600-NU30CWALTN-L27SKB-00XX	60	2935	1853	2543	1601	80	4546	3464	2543	1601
RPES0950-NU30CWALTN-L36SKB-00XX	60	4523	3076	3211	2054	80	6915	5468	3211	2054
RPES1600-NU30CWALTN-L46SKB-00XX	60	7605	4999	5506	3422	80	11614	9008	5506	3422
RPES2500-NU30CWALTN-L46SKB-00XX	60	12424	8635	7822	4791	80	18543	14847	7822	4791
RPES4000-NU30CWALTN-Q55SKB-00XX	60	19967	14197	12550	7934	80	30050	24280	12550	7934

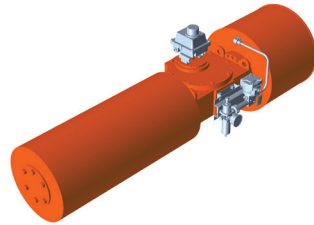
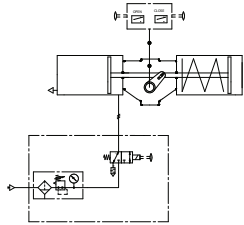


# CONTROL TYPE SELECTION GUIDE

## Scotch Yoke VOS-PAC Modular Control Configurations

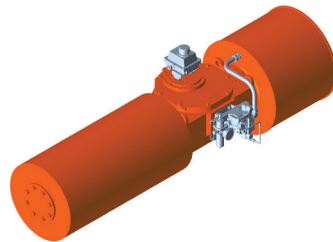
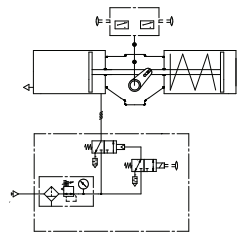
### CONTROL TYPE A Spring Return Shutdown for Small Torque Range

P	SR	M	FR	SV	1oo1	X	X
Pneumatic	Spring Return	Modular	Filter Regulator	Solenoid Valve	1 out of 1	X	X



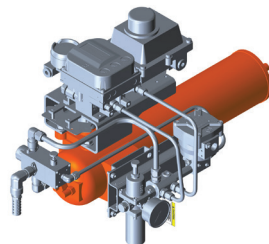
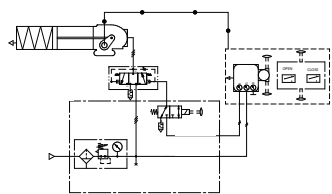
### CONTROL TYPE B Spring Return Shutdown for Large Torque Range

P	SR	M	FR	SV	1oo1	X	PV
Pneumatic	Spring Return	Modular	Filter Regulator	Solenoid Valve	1 out of 1	X	Pilot Valve



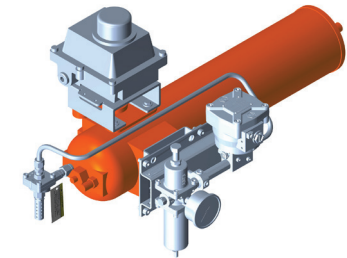
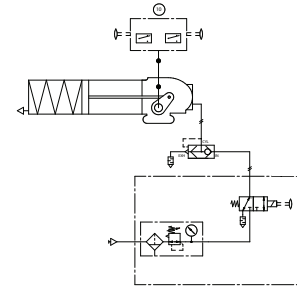
### CONTROL TYPE C Spring Return Shutdown with Smart Positioner

P	SR	M	FR	SV	1oo1	SP	VB
Pneumatic	Spring Return	Modular	Filter Regulator	Solenoid Valve	1 out of 1	Smart Positioner	Volume Booster



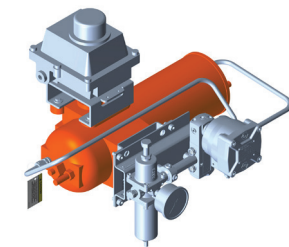
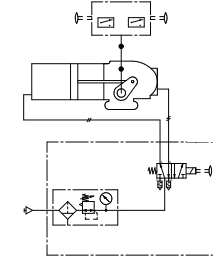
### CONTROL TYPE D Spring Return Fast Shutdown through Quick Exhaust Valve

P	SR	M	FR	SV	1oo1	X	QEV
Pneumatic	Spring Return	Modular	Filter Regulator	Solenoid Valve	1 out of 1	X	Quick Exhaust Valve



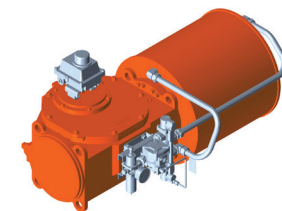
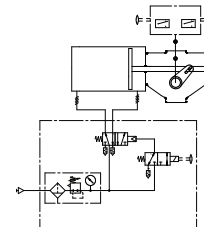
### CONTROL TYPE E Double Acting Shutdown for Small Torque Range

P	DA	M	FR	SV	1oo1	X	X
Pneumatic	Double Acting	Modular	Filter Regulator	Solenoid Valve	1 out of 1	X	X



### CONTROL TYPE F Double Acting Shutdown for Large Torque Range

P	DA	M	FR	SV	1oo1	X	PV
Pneumatic	Double Acting	Modular	Filter Regulator	Solenoid Valve	1 out of 1	X	Pilot Valve



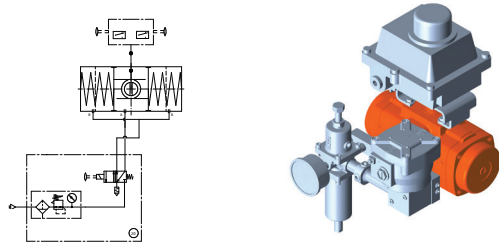
**Note:** Configurations can be subjected to some late customization depending on project needs

## CONTROL TYPE SELECTION GUIDE

# Rack and Pinion VOS-PAC Modular Control Configurations

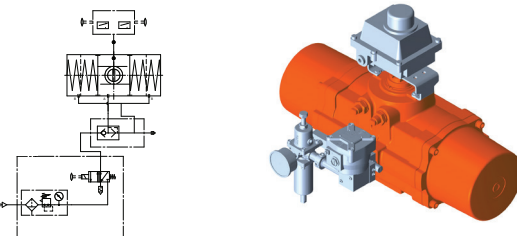
### CONTROL TYPE G Spring Return Shutdown for Small Torque Range

P	SR	M	FR	SV	1oo1	X	X
Pneumatic	Spring Return	Modular	Filter Regulator	Solenoid Valve	1 out of 1	X	X



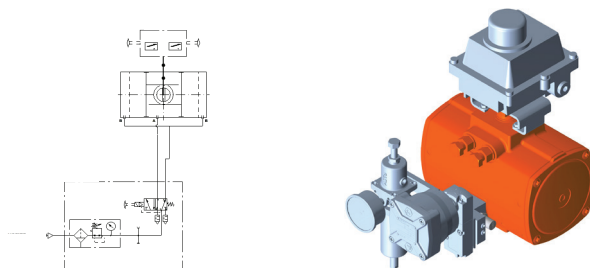
### CONTROL TYPE H Spring Return Shutdown for Large Torque Range

P	SR	M	FR	SV	1oo1	X	BB
Pneumatic	Spring Return	Modular	Filter Regulator	Solenoid Valve	1 out of 1	X	Breather Block



### CONTROL TYPE I Double Acting Shutdown

P	DA	M	FR	SV	1oo1	X	X
Pneumatic	Double Acting	Modular	Filter Regulator	Solenoid Valve	1 out of 1	X	X



**Note:** Configurations can be subjected to some late customization depending on project needs

# SECTION 2

Step by Step to Your Technical Data

# Step by Step to Your Technical Data

With the VOS-PAC number, you can reference all assembly and piping drawings from the full catalog.



60  
psig

80  
psig

Actuator Model	Control Type	Controls Code	Modular Control System Size & Description	Tubing Size	Air Stroke CCW (Sec)	Air Stroke CW (Sec)	VOS-PAC Number (ATEX / IECEx)	VOS-PAC Number (UL/FM/CSA)	General Assembly Drawing	Page	Piping Schematic	Page
CBB315	E	P-DA-M-FR-SV-1001-X-X	1/4"	3/8" (.049WT)	1	0.5	VAVOS-PAC-SY108	VAVOS-PAC-SY108-NA	VA-ED-004-8292	<a href="#">32</a>	VA-ED-004-8000	<a href="#">33</a>
CBB420	E	P-DA-M-FR-SV-1001-X-X	1/4"	3/8" (.049WT)	2	1	VAVOS-PAC-SY110	VAVOS-PAC-SY110-NA	VA-ED-004-8355	<a href="#">34</a>	VA-ED-004-8037	<a href="#">35</a>
CBB525	E	P-DA-M-FR-SV-1001-X-X	1/4"	3/8" (.049WT)	3.5	2	VAVOS-PAC-SY112	VAVOS-PAC-SY112-NA	VA-ED-004-8433	<a href="#">36</a>	VA-ED-004-8038	<a href="#">37</a>
CBB725	E	P-DA-M-FR-SV-1001-X-X	1/4"	3/8" (.049WT)	5.5	3.5	VAVOS-PAC-SY114	VAVOS-PAC-SY114-NA	VA-ED-004-8575	<a href="#">38</a>	VA-ED-004-8039	<a href="#">39</a>
CBA730	E	P-DA-M-FR-SV-1001-X-X	1/4"	3/8" (.049WT)	9.5	4	VAVOS-PAC-SY116	VAVOS-PAC-SY116-NA	VA-ED-004-8580	<a href="#">40</a>	VA-ED-004-8040	<a href="#">41</a>
CBB315	E	P-DA-M-FR-SV-1001-X-X	1/2"	1/2" (.065 WT)	0.5	0.5	VAVOS-PAC-SY109	VAVOS-PAC-SY109-NA	VA-ED-004-8316	<a href="#">42</a>	VA-ED-004-8003	<a href="#">43</a>
CBB420	E	P-DA-M-FR-SV-1001-X-X	1/2"	1/2" (.065 WT)	1	0.5	VAVOS-PAC-SY111	VAVOS-PAC-SY111-NA	VA-ED-004-8385	<a href="#">44</a>	VA-ED-004-8025	<a href="#">45</a>
CBB525	E	P-DA-M-FR-SV-1001-X-X	1/2"	1/2" (.065 WT)	2	1	VAVOS-PAC-SY113	VAVOS-PAC-SY113-NA	VA-ED-004-8388	<a href="#">46</a>	VA-ED-004-8026	<a href="#">47</a>
CBB725	E	P-DA-M-FR-SV-1001-X-X	1/2"	1/2" (.065 WT)	2.5	1.5	VAVOS-PAC-SY115	VAVOS-PAC-SY115-NA	VA-ED-004-8432	<a href="#">48</a>	VA-ED-004-8027	<a href="#">49</a>
CBA730	E	P-DA-M-FR-SV-1001-X-X	1/2"	1/2" (.065 WT)	4.5	1.5	VAVOS-PAC-SY117	VAVOS-PAC-SY117-NA	VA-ED-004-8435	<a href="#">50</a>	VA-ED-004-8028	<a href="#">51</a>

**Note:** Configurations can be subjected to some late customization depending on project needs

# CBx-Series Double Acting

Actuator Model	Control Type	Controls Code	Modular Control System Size & Description	Tubing Size	Air Stroke CCW (Sec)	Air Stroke CW (Sec)	VOS-PAC Number (ATEX/IECEx)	VOS-PAC Number (UL/FM/CSA)	General Assembly Drawing	Page	Piping Schematic	Page
CBB315	E	P-DA-M-FR-SV-1oo1-X-X	1/4"	3/8" (.049WT)	1	0.5	VAVOS-PAC-SY108	VAVOS-PAC-SY108-NA	VA-ED-004-8292	<a href="#">32</a>	VA-ED-004-8000	<a href="#">33</a>
CBB420	E	P-DA-M-FR-SV-1oo1-X-X	1/4"	3/8" (.049WT)	2	1	VAVOS-PAC-SY110	VAVOS-PAC-SY110-NA	VA-ED-004-8355	<a href="#">34</a>	VA-ED-004-8037	<a href="#">35</a>
CBB525	E	P-DA-M-FR-SV-1oo1-X-X	1/4"	3/8" (.049WT)	3.5	2	VAVOS-PAC-SY112	VAVOS-PAC-SY112-NA	VA-ED-004-8433	<a href="#">36</a>	VA-ED-004-8038	<a href="#">37</a>
CBB725	E	P-DA-M-FR-SV-1oo1-X-X	1/4"	3/8" (.049WT)	5.5	3.5	VAVOS-PAC-SY114	VAVOS-PAC-SY114-NA	VA-ED-004-8575	<a href="#">38</a>	VA-ED-004-8039	<a href="#">39</a>
CBA730	E	P-DA-M-FR-SV-1oo1-X-X	1/4"	3/8" (.049WT)	9.5	4	VAVOS-PAC-SY116	VAVOS-PAC-SY116-NA	VA-ED-004-8580	<a href="#">40</a>	VA-ED-004-8040	<a href="#">41</a>
CBB315	E	P-DA-M-FR-SV-1oo1-X-X	1/2"	1/2" (.065 WT)	0.5	0.5	VAVOS-PAC-SY109	VAVOS-PAC-SY109-NA	VA-ED-004-8316	<a href="#">42</a>	VA-ED-004-8003	<a href="#">43</a>
CBB420	E	P-DA-M-FR-SV-1oo1-X-X	1/2"	1/2" (.065 WT)	1	0.5	VAVOS-PAC-SY111	VAVOS-PAC-SY111-NA	VA-ED-004-8385	<a href="#">44</a>	VA-ED-004-8025	<a href="#">45</a>
CBB525	E	P-DA-M-FR-SV-1oo1-X-X	1/2"	1/2" (.065 WT)	2	1	VAVOS-PAC-SY113	VAVOS-PAC-SY113-NA	VA-ED-004-8388	<a href="#">46</a>	VA-ED-004-8026	<a href="#">47</a>
CBB725	E	P-DA-M-FR-SV-1oo1-X-X	1/2"	1/2" (.065 WT)	2.5	1.5	VAVOS-PAC-SY115	VAVOS-PAC-SY115-NA	VA-ED-004-8432	<a href="#">48</a>	VA-ED-004-8027	<a href="#">49</a>
CBA730	E	P-DA-M-FR-SV-1oo1-X-X	1/2"	1/2" (.065 WT)	4.5	1.5	VAVOS-PAC-SY117	VAVOS-PAC-SY117-NA	VA-ED-004-8435	<a href="#">50</a>	VA-ED-004-8028	<a href="#">51</a>

CONFIGURATION

CONTROL TYPE	<b>E</b> Shutdown for Small Torque Range								
P	DA	M	FR	SV	1oo1	X	X		
P	Pneumatic			SV	Solenoid Valve				
DA	Double Acting		1oo1	1 out of 1					
M	Modular			X	X				
FR	Filter Regulator			X	X				

# CBx-Series Double Acting

Actuator Model	Control Type	Controls Code	Modular Control System Size & Description	Tubing Size	Air Stroke CCW (Sec)	Air Stroke CW (Sec)	VOS-PAC Number (ATEX/IECEX)	VOS-PAC Number (UL/FM/CSA)	General Assembly Drawing	Page	Piping Schematic	Page
CBB315	E	P-DA-M-FR-SV-1oo1-X-X	1/4"	3/8" (.049WT)	1.5	0.5	VAVOS-PAC-SY248	VAVOS-PAC-SY248-NA	VA-ED-004-8292	<a href="#">32</a>	VA-ED-004-8000	<a href="#">33</a>
CBB420	E	P-DA-M-FR-SV-1oo1-X-X	1/4"	3/8" (.049WT)	2.5	1	VAVOS-PAC-SY250	VAVOS-PAC-SY250-NA	VA-ED-004-8355	<a href="#">34</a>	VA-ED-004-8037	<a href="#">35</a>
CBB525	E	P-DA-M-FR-SV-1oo1-X-X	1/4"	3/8" (.049WT)	4	2	VAVOS-PAC-SY252	VAVOS-PAC-SY252-NA	VA-ED-004-8433	<a href="#">36</a>	VA-ED-004-8038	<a href="#">37</a>
CBB725	E	P-DA-M-FR-SV-1oo1-X-X	1/4"	3/8" (.049WT)	6.5	3.5	VAVOS-PAC-SY254	VAVOS-PAC-SY254-NA	VA-ED-004-8575	<a href="#">38</a>	VA-ED-004-8039	<a href="#">39</a>
CBA730	E	P-DA-M-FR-SV-1oo1-X-X	1/4"	3/8" (.049WT)	11	4.5	VAVOS-PAC-SY256	VAVOS-PAC-SY256-NA	VA-ED-004-8580	<a href="#">40</a>	VA-ED-004-8040	<a href="#">41</a>
CBB315	E	P-DA-M-FR-SV-1oo1-X-X	1/2"	1/2" (.065 WT)	0.5	0.5	VAVOS-PAC-SY249	VAVOS-PAC-SY249-NA	VA-ED-004-8316	<a href="#">42</a>	VA-ED-004-8003	<a href="#">43</a>
CBB420	E	P-DA-M-FR-SV-1oo1-X-X	1/2"	1/2" (.065 WT)	1	0.5	VAVOS-PAC-SY251	VAVOS-PAC-SY251-NA	VA-ED-004-8385	<a href="#">44</a>	VA-ED-004-8025	<a href="#">45</a>
CBB525	E	P-DA-M-FR-SV-1oo1-X-X	1/2"	1/2" (.065 WT)	2	1	VAVOS-PAC-SY253	VAVOS-PAC-SY253-NA	VA-ED-004-8388	<a href="#">46</a>	VA-ED-004-8026	<a href="#">47</a>
CBB725	E	P-DA-M-FR-SV-1oo1-X-X	1/2"	1/2" (.065 WT)	3	1.5	VAVOS-PAC-SY255	VAVOS-PAC-SY255-NA	VA-ED-004-8432	<a href="#">48</a>	VA-ED-004-8027	<a href="#">49</a>
CBA730	E	P-DA-M-FR-SV-1oo1-X-X	1/2"	1/2" (.065 WT)	5	2	VAVOS-PAC-SY257	VAVOS-PAC-SY257-NA	VA-ED-004-8435	<a href="#">50</a>	VA-ED-004-8028	<a href="#">51</a>

CONFIGURATION

CONTROL TYPE	E Shutdown for Small Torque Range							
P	DA	M	FR	SV	1oo1	X	X	
P	Pneumatic			SV	Solenoid Valve			
DA	Double Acting		1oo1	1 out of 1				
M	Modular			X	X			
FR	Filter Regulator			X	X			

# CBx-Series Spring Return

CBx-Series  
SPRING RETURN

Actuator Model	Control Type	Controls Code	Modular Control System Size & Description	Tubing Size	Air Stroke (Sec)	Spring Stroke (Sec)	VOS-PAC Number (ATEX /IECEX)	VOS-PAC Number (UL/FM/CSA)	General Assembly Drawing	Page	Piping Schematic	Page
CBB315-SR60(CW)	A	P-SR-M-FR-SV-1oo1-X-X	1/4"	3/8" (.049WT)	1.5	1	VAVOS-PAC-SY001	VAVOS-PAC-SY001-NA	VA-ED-004-7240	<a href="#">52</a>	VA-ED-004-7241	<a href="#">53</a>
CBB315-SR60(CW)	A	P-SR-M-FR-SV-1oo1-X-X	1/2"	1/2" (.065 WT)	0.5	0.5	VAVOS-PAC-SY002	VAVOS-PAC-SY002-NA	VA-ED-004-7267	<a href="#">54</a>	VA-ED-004-7268	<a href="#">55</a>
CBB315-SR60(CW)	C	P-SR-M-FR-SV-1oo1-S-VB	1/2" for DVC with 1/2" VB	1/2" (.065 WT)	0.5	0.5	VAVOS-PAC-SY003	VAVOS-PAC-SY003-NA	VA-ED-004-8902	<a href="#">56</a>	VA-ED-004-7422	<a href="#">57</a>
CBB315-SR60(CW)	D	P-SR-M-FR-SV-1oo1-X-QEV	1/4" with 1/4" QEV	3/8" (.049WT)	1.5	0.5	VAVOS-PAC-SY004	VAVOS-PAC-SY004-NA	VA-ED-004-8566	<a href="#">58</a>	VA-ED-004-7951	<a href="#">59</a>
CBB415-SR60(CW)	A	P-SR-M-FR-SV-1oo1-X-X	1/4"	3/8" (.049WT)	2	1.5	VAVOS-PAC-SY005	VAVOS-PAC-SY005-NA	VA-ED-004-7220	<a href="#">60</a>	VA-ED-004-7221	<a href="#">61</a>
CBB415-SR60(CW)	A	P-SR-M-FR-SV-1oo1-X-X	1/2"	1/2" (.065 WT)	1	1	VAVOS-PAC-SY006	VAVOS-PAC-SY006-NA	VA-ED-004-7255	<a href="#">62</a>	VA-ED-004-7256	<a href="#">63</a>
CBB415-SR60(CW)	C	P-SR-M-FR-SV-1oo1-S-VB	1/2" for DVC with 1/2" VB	1/2" (.065 WT)	1	0.5	VAVOS-PAC-SY007	VAVOS-PAC-SY007-NA	VA-ED-004-8903	<a href="#">64</a>	VA-ED-004-7423	<a href="#">65</a>
CBB415-SR60(CW)	D	P-SR-M-FR-SV-1oo1-X-QEV	1/4" with 1/4" QEV	3/8" (.049WT)	2	0.5	VAVOS-PAC-SY008	VAVOS-PAC-SY008-NA	VA-ED-004-8567	<a href="#">66</a>	VA-ED-004-7974	<a href="#">67</a>
CBB420-SR60(CW)	A	P-SR-M-FR-SV-1oo1-X-X	1/4"	3/8" (.049WT)	3	2.5	VAVOS-PAC-SY009	VAVOS-PAC-SY009-NA	VA-ED-004-7183	<a href="#">68</a>	VA-ED-004-7184	<a href="#">69</a>
CBB420-SR60(CW)	A	P-SR-M-FR-SV-1oo1-X-X	1/2"	1/2" (.065 WT)	1	1	VAVOS-PAC-SY010	VAVOS-PAC-SY010-NA	VA-ED-004-7253	<a href="#">70</a>	VA-ED-004-7254	<a href="#">71</a>
CBB420-SR60(CW)	C	P-SR-M-FR-SV-1oo1-S-VB	1/2" for DVC with 1/2" VB	1/2" (.065 WT)	1	0.5	VAVOS-PAC-SY011	VAVOS-PAC-SY011-NA	VA-ED-004-8904	<a href="#">72</a>	VA-ED-004-7425	<a href="#">73</a>
CBB420-SR60(CW)	D	P-SR-M-FR-SV-1oo1-X-QEV	1/4" with 1/4" QEV	3/8" (.049WT)	3	0.5	VAVOS-PAC-SY012	VAVOS-PAC-SY012-NA	VA-ED-004-8568	<a href="#">74</a>	VA-ED-004-7975	<a href="#">75</a>
CBB520-SR60(CW)	A	P-SR-M-FR-SV-1oo1-X-X	1/4"	3/8" (.049WT)	3.5	3	VAVOS-PAC-SY013	VAVOS-PAC-SY013-NA	VA-ED-004-2230	<a href="#">76</a>	VA-ED-004-2447	<a href="#">77</a>
CBB520-SR60(CW)	A	P-SR-M-FR-SV-1oo1-X-X	1/2"	1/2" (.065 WT)	1.5	1.5	VAVOS-PAC-SY014	VAVOS-PAC-SY014-NA	VA-ED-004-7245	<a href="#">78</a>	VA-ED-004-7246	<a href="#">79</a>
CBB520-SR60(CW)	C	P-SR-M-FR-SV-1oo1-S-VB	1/2" for DVC with 1/2" VB	1/2" (.065 WT)	1.5	1	VAVOS-PAC-SY015	VAVOS-PAC-SY015-NA	VA-ED-004-8905	<a href="#">80</a>	VA-ED-004-7426	<a href="#">81</a>
CBB520-SR60(CW)	D	P-SR-M-FR-SV-1oo1-X-QEV	1/4" with 1/4" QEV	3/8" (.049WT)	3.5	0.5	VAVOS-PAC-SY016	VAVOS-PAC-SY016-NA	VA-ED-004-8569	<a href="#">82</a>	VA-ED-004-7976	<a href="#">83</a>
CBB520-SR60(CW)	D	P-SR-M-FR-SV-1oo1-X-QEV	1/2" with 1/4" QEV	1/2" (.065 WT)	1.5	0.5	VAVOS-PAC-SY017	VAVOS-PAC-SY017-NA	VA-ED-004-8165	<a href="#">84</a>	VA-ED-004-7969	<a href="#">85</a>
CBB525-SR60(CW)	A	P-SR-M-FR-SV-1oo1-X-X	1/4"	3/8" (.049WT)	5	4	VAVOS-PAC-SY018	VAVOS-PAC-SY018-NA	VA-ED-004-7129	<a href="#">86</a>	VA-ED-004-7130	<a href="#">87</a>
CBB525-SR60(CW)	A	P-SR-M-FR-SV-1oo1-X-X	1/2"	1/2" (.065 WT)	2	1.5	VAVOS-PAC-SY019	VAVOS-PAC-SY019-NA	VA-ED-004-7242	<a href="#">88</a>	VA-ED-004-7243	<a href="#">89</a>
CBB525-SR60(CW)	C	P-SR-M-FR-SV-1oo1-S-VB	1/2" for DVC with 1/2" VB	1/2" (.065 WT)	2	1	VAVOS-PAC-SY020	VAVOS-PAC-SY020-NA	VA-ED-004-7559	<a href="#">90</a>	VA-ED-004-7427	<a href="#">91</a>
CBB525-SR60(CW)	D	P-SR-M-FR-SV-1oo1-X-QEV	1/4" with 1/4" QEV	3/8" (.049WT)	5	0.5	VAVOS-PAC-SY021	VAVOS-PAC-SY021-NA	VA-ED-004-8531	<a href="#">92</a>	VA-ED-004-7977	<a href="#">93</a>
CBB525-SR60(CW)	D	P-SR-M-FR-SV-1oo1-X-QEV	1/2" with 1/4" QEV	1/2" (.065 WT)	2	0.5	VAVOS-PAC-SY022	VAVOS-PAC-SY022-NA	VA-ED-004-8437	<a href="#">94</a>	VA-ED-004-7970	<a href="#">95</a>
CBB725-SR60(CW)	A	P-SR-M-FR-SV-1oo1-X-X	1/4"	3/8" (.049WT)	7.5	6	VAVOS-PAC-SY023	VAVOS-PAC-SY023-NA	VA-ED-004-7052	<a href="#">96</a>	VA-ED-004-7053	<a href="#">97</a>
CBB725-SR60(CW)	A	P-SR-M-FR-SV-1oo1-X-X	1/2"	1/2" (.065 WT)	3	2.5	VAVOS-PAC-SY024	VAVOS-PAC-SY024-NA	VA-ED-004-7234	<a href="#">98</a>	VA-ED-004-7235	<a href="#">99</a>
CBB725-SR60(CW)	C	P-SR-M-FR-SV-1oo1-S-VB	1/2" for DVC with 1/2" VB	1/2" (.065 WT)	3	1.5	VAVOS-PAC-SY025	VAVOS-PAC-SY025-NA	VA-ED-004-7630	<a href="#">100</a>	VA-ED-004-7428	<a href="#">101</a>
CBB725-SR60(CW)	D	P-SR-M-FR-SV-1oo1-X-QEV	1/4" with 1/4" QEV	3/8" (.049WT)	7.5	1	VAVOS-PAC-SY026	VAVOS-PAC-SY026-NA	VA-ED-004-8541	<a href="#">102</a>	VA-ED-004-7978	<a href="#">103</a>
CBB725-SR60(CW)	D	P-SR-M-FR-SV-1oo1-X-QEV	1/2" with 1/4" QEV	1/2" (.065 WT)	3	1	VAVOS-PAC-SY027	VAVOS-PAC-SY027-NA	VA-ED-004-8438	<a href="#">104</a>	VA-ED-004-7971	<a href="#">105</a>
CBA730-SR60(CW)	A	P-SR-M-FR-SV-1oo1-X-X	1/4"	3/8" (.049WT)	13	10.5	VAVOS-PAC-SY028	VAVOS-PAC-SY028-NA	VA-ED-004-7006	<a href="#">106</a>	VA-ED-004-7007	<a href="#">107</a>
CBA730-SR60(CW)	A	P-SR-M-FR-SV-1oo1-X-X	1/2"	1/2" (.065 WT)	5	4	VAVOS-PAC-SY029	VAVOS-PAC-SY029-NA	VA-ED-004-7177	<a href="#">108</a>	VA-ED-004-7178	<a href="#">109</a>
CBA730-SR60(CW)	C	P-SR-M-FR-SV-1oo1-S-VB	1/2" for DVC with 1/2" VB	1/2" (.065 WT)	5	2.5	VAVOS-PAC-SY030	VAVOS-PAC-SY030-NA	VA-ED-004-8742	<a href="#">110</a>	VA-ED-004-7429	<a href="#">111</a>
CBA730-SR60(CW)	D	P-SR-M-FR-SV-1oo1-X-QEV	1/4" with 1/4" QEV	3/8" (.049WT)	13	1.5	VAVOS-PAC-SY031	VAVOS-PAC-SY031-NA	VA-ED-004-8551	<a href="#">112</a>	VA-ED-004-7979	<a href="#">113</a>
CBA730-SR60(CW)	D	P-SR-M-FR-SV-1oo1-X-QEV	1/2" with 1/4" QEV	1/2" (.065 WT)	5	1.5	VAVOS-PAC-SY032	VAVOS-PAC-SY032-NA	VA-ED-004-8439	<a href="#">114</a>	VA-ED-004-7972	<a href="#">115</a>
CBA930-SR60(CW)	A	P-SR-M-FR-SV-1oo1-X-X	1/4"	3/8" (.049WT)	16.5	13.5	VAVOS-PAC-SY033	VAVOS-PAC-SY033-NA	VA-ED-004-7037	<a href="#">116</a>	VA-ED-004-7038	<a href="#">117</a>
CBA930-SR60(CW)	A	P-SR-M-FR-SV-1oo1-X-X	1/2"	1/2" (.065 WT)	6.5	5	VAVOS-PAC-SY034	VAVOS-PAC-SY034-NA	VA-ED-004-8749	<a href="#">118</a>	VA-ED-004-7933	<a href="#">119</a>
CBA930-SR60(CW)	C	P-SR-M-FR-SV-1oo1-S-VB	1/2" for DVC with 1/2" VB	1/2" (.065 WT)	6	3	VAVOS-PAC-SY035	VAVOS-PAC-SY035-NA	VA-ED-004-8743	<a href="#">120</a>	VA-ED-004-7430	<a href="#">121</a>
CBA930-SR60(CW)	D	P-SR-M-FR-SV-1oo1-X-QEV	1/4" with 1/4" QEV	3/8" (.049WT)	16.5	2	VAVOS-PAC-SY036	VAVOS-PAC-SY036-NA	VA-ED-004-8557	<a href="#">122</a>	VA-ED-004-7980	<a href="#">123</a>
CBA930-SR60(CW)	D	P-SR-M-FR-SV-1oo1-X-QEV	1/2" with 1/4" QEV	1/2" (.065 WT)	6.5	2	VAVOS-PAC-SY037	VAVOS-PAC-SY037-NA	VA-ED-004-8440	<a href="#">124</a>	VA-ED-004-7973	<a href="#">125</a>

CONFIGURATION

CONTROL TYPE	A Shutdown for Small Torque Range						
	P	SR	M	FR	SV	1oo1	X X
P	Pneumatic				SV	Solenoid Valve	
SR	Spring Return				1oo1	1 out of 1	
M	Modular			X	X		
FR	Filter Regulator		X	X			

CONTROL TYPE	C Shutdown with Smart Positioner						
	P	SR	M	FR	SV	1oo1	SP VB
P	Pneumatic				SV	Solenoid Valve	
SR	Spring Return				1oo1	1 out of 1	
M	Modular				SP	Smart Positioner	
FR	Filter Regulator				VB	Volume Booster	

CONTROL TYPE	D Fast Shutdown through Quick Exhaust Valve						
	P	SR	M	FR	SV	1oo1	X QEV
P	Pneumatic				SV	Solenoid Valve	
SR	Spring Return				1oo1	1 out of 1	
M	Modular			X	X		
FR	Filter Regulator				QEV	Quick Exhaust Valve	



# CBx-Series Spring Return

80  
psig

CBx-Series  
SPRING RETURN

Actuator Model	Control Type	Controls Code	Modular Control System Size & Description	Tubing Size	Air Stroke (Sec)	Spring Stroke (Sec)	VOS-PAC Number (ATEX/IECEX)	VOS-PAC Number (UL/FM/CSA)	General Assembly Drawing	Page	Piping Schematic	Page
CBB315-SR60(CW)	A	P-SR-M-FR-SV-1oo1-X-X	1/4"	3/8" (.049WT)	1.5	1	VAVOS-PAC-SY141	VAVOS-PAC-SY141-NA	VA-ED-004-7240	<a href="#">52</a>	VA-ED-004-7241	<a href="#">53</a>
CBB315-SR60(CW)	A	P-SR-M-FR-SV-1oo1-X-X	1/2"	1/2" (.065 WT)	1	0.5	VAVOS-PAC-SY142	VAVOS-PAC-SY142-NA	VA-ED-004-7267	<a href="#">54</a>	VA-ED-004-7268	<a href="#">55</a>
CBB315-SR60(CW)	C	P-SR-M-FR-SV-1oo1-S-VB	1/2" for DVC with 1/2" VB	1/2" (.065 WT)	0.5	0.5	VAVOS-PAC-SY143	VAVOS-PAC-SY143-NA	VA-ED-004-8902	<a href="#">56</a>	VA-ED-004-7422	<a href="#">57</a>
CBB315-SR60(CW)	D	P-SR-M-FR-SV-1oo1-X-QEV	1/4" with 1/4" QEV	3/8" (.049WT)	1.5	0.5	VAVOS-PAC-SY144	VAVOS-PAC-SY144-NA	VA-ED-004-8566	<a href="#">58</a>	VA-ED-004-7951	<a href="#">59</a>
CBB415-SR60(CW)	A	P-SR-M-FR-SV-1oo1-X-X	1/4"	3/8" (.049WT)	2	1.5	VAVOS-PAC-SY145	VAVOS-PAC-SY145-NA	VA-ED-004-7220	<a href="#">60</a>	VA-ED-004-7221	<a href="#">61</a>
CBB415-SR60(CW)	A	P-SR-M-FR-SV-1oo1-X-X	1/2"	1/2" (.065 WT)	1	1	VAVOS-PAC-SY146	VAVOS-PAC-SY146-NA	VA-ED-004-7255	<a href="#">62</a>	VA-ED-004-7256	<a href="#">63</a>
CBB415-SR60(CW)	C	P-SR-M-FR-SV-1oo1-S-VB	1/2" for DVC with 1/2" VB	1/2" (.065 WT)	1	0.5	VAVOS-PAC-SY147	VAVOS-PAC-SY147-NA	VA-ED-004-8903	<a href="#">64</a>	VA-ED-004-7423	<a href="#">65</a>
CBB415-SR60(CW)	D	P-SR-M-FR-SV-1oo1-X-QEV	1/4" with 1/4" QEV	3/8" (.049WT)	2	0.5	VAVOS-PAC-SY148	VAVOS-PAC-SY148-NA	VA-ED-004-8567	<a href="#">66</a>	VA-ED-004-7974	<a href="#">67</a>
CBB420-SR60(CW)	A	P-SR-M-FR-SV-1oo1-X-X	1/4"	3/8" (.049WT)	3	2.5	VAVOS-PAC-SY149	VAVOS-PAC-SY149-NA	VA-ED-004-7183	<a href="#">68</a>	VA-ED-004-7184	<a href="#">69</a>
CBB420-SR60(CW)	A	P-SR-M-FR-SV-1oo1-X-X	1/2"	1/2" (.065 WT)	1.5	1	VAVOS-PAC-SY150	VAVOS-PAC-SY150-NA	VA-ED-004-7253	<a href="#">70</a>	VA-ED-004-7254	<a href="#">71</a>
CBB420-SR60(CW)	C	P-SR-M-FR-SV-1oo1-S-VB	1/2" for DVC with 1/2" VB	1/2" (.065 WT)	1	0.5	VAVOS-PAC-SY151	VAVOS-PAC-SY151-NA	VA-ED-004-8904	<a href="#">72</a>	VA-ED-004-7425	<a href="#">73</a>
CBB420-SR60(CW)	D	P-SR-M-FR-SV-1oo1-X-QEV	1/4" with 1/4" QEV	3/8" (.049WT)	3	0.5	VAVOS-PAC-SY152	VAVOS-PAC-SY152-NA	VA-ED-004-8568	<a href="#">74</a>	VA-ED-004-7975	<a href="#">75</a>
CBB520-SR60(CW)	A	P-SR-M-FR-SV-1oo1-X-X	1/4"	3/8" (.049WT)	4	3	VAVOS-PAC-SY153	VAVOS-PAC-SY153-NA	VA-ED-004-2230	<a href="#">76</a>	VA-ED-004-2447	<a href="#">77</a>
CBB520-SR60(CW)	A	P-SR-M-FR-SV-1oo1-X-X	1/2"	1/2" (.065 WT)	1.5	1.5	VAVOS-PAC-SY154	VAVOS-PAC-SY154-NA	VA-ED-004-7245	<a href="#">78</a>	VA-ED-004-7246	<a href="#">79</a>
CBB520-SR60(CW)	C	P-SR-M-FR-SV-1oo1-S-VB	1/2" for DVC with 1/2" VB	1/2" (.065 WT)	1.5	1	VAVOS-PAC-SY155	VAVOS-PAC-SY155-NA	VA-ED-004-8905	<a href="#">80</a>	VA-ED-004-7426	<a href="#">81</a>
CBB520-SR60(CW)	D	P-SR-M-FR-SV-1oo1-X-QEV	1/4" with 1/4" QEV	3/8" (.049WT)	4	0.5	VAVOS-PAC-SY156	VAVOS-PAC-SY156-NA	VA-ED-004-8569	<a href="#">82</a>	VA-ED-004-7976	<a href="#">83</a>
CBB520-SR60(CW)	D	P-SR-M-FR-SV-1oo1-X-QEV	1/2" with 1/4" QEV	1/2" (.065 WT)	1.5	0.5	VAVOS-PAC-SY157	VAVOS-PAC-SY157-NA	VA-ED-004-8165	<a href="#">84</a>	VA-ED-004-7969	<a href="#">85</a>
CBB525-SR60(CW)	A	P-SR-M-FR-SV-1oo1-X-X	1/4"	3/8" (.049WT)	5.5	4	VAVOS-PAC-SY158	VAVOS-PAC-SY158-NA	VA-ED-004-7129	<a href="#">86</a>	VA-ED-004-7130	<a href="#">87</a>
CBB525-SR60(CW)	A	P-SR-M-FR-SV-1oo1-X-X	1/2"	1/2" (.065 WT)	2	1.5	VAVOS-PAC-SY159	VAVOS-PAC-SY159-NA	VA-ED-004-7242	<a href="#">88</a>	VA-ED-004-7243	<a href="#">89</a>
CBB525-SR60(CW)	C	P-SR-M-FR-SV-1oo1-S-VB	1/2" for DVC with 1/2" VB	1/2" (.065 WT)	2	1	VAVOS-PAC-SY160	VAVOS-PAC-SY160-NA	VA-ED-004-7559	<a href="#">90</a>	VA-ED-004-7427	<a href="#">91</a>
CBB525-SR60(CW)	D	P-SR-M-FR-SV-1oo1-X-QEV	1/4" with 1/4" QEV	3/8" (.049WT)	5	0.5	VAVOS-PAC-SY161	VAVOS-PAC-SY161-NA	VA-ED-004-8531	<a href="#">92</a>	VA-ED-004-7977	<a href="#">93</a>
CBB525-SR60(CW)	D	P-SR-M-FR-SV-1oo1-X-QEV	1/2" with 1/4" QEV	1/2" (.065 WT)	2	0.5	VAVOS-PAC-SY162	VAVOS-PAC-SY162-NA	VA-ED-004-8437	<a href="#">94</a>	VA-ED-004-7970	<a href="#">95</a>
CBB725-SR60(CW)	A	P-SR-M-FR-SV-1oo1-X-X	1/4"	3/8" (.049WT)	8.5	6	VAVOS-PAC-SY163	VAVOS-PAC-SY163-NA	VA-ED-004-7052	<a href="#">96</a>	VA-ED-004-7053	<a href="#">97</a>
CBB725-SR60(CW)	A	P-SR-M-FR-SV-1oo1-X-X	1/2"	1/2" (.065 WT)	3.5	2.5	VAVOS-PAC-SY164	VAVOS-PAC-SY164-NA	VA-ED-004-7234	<a href="#">98</a>	VA-ED-004-7235	<a href="#">99</a>
CBB725-SR60(CW)	C	P-SR-M-FR-SV-1oo1-S-VB	1/2" for DVC with 1/2" VB	1/2" (.065 WT)	3.5	1.5	VAVOS-PAC-SY165	VAVOS-PAC-SY165-NA	VA-ED-004-7630	<a href="#">100</a>	VA-ED-004-7428	<a href="#">101</a>
CBB725-SR60(CW)	D	P-SR-M-FR-SV-1oo1-X-QEV	1/4" with 1/4" QEV	3/8" (.049WT)	8.5	1	VAVOS-PAC-SY166	VAVOS-PAC-SY166-NA	VA-ED-004-8541	<a href="#">102</a>	VA-ED-004-7978	<a href="#">103</a>
CBB725-SR60(CW)	D	P-SR-M-FR-SV-1oo1-X-QEV	1/2" with 1/4" QEV	1/2" (.065 WT)	3	1	VAVOS-PAC-SY167	VAVOS-PAC-SY167-NA	VA-ED-004-8438	<a href="#">104</a>	VA-ED-004-7971	<a href="#">105</a>
CBA730-SR60(CW)	A	P-SR-M-FR-SV-1oo1-X-X	1/4"	3/8" (.049WT)	14.5	10.5	VAVOS-PAC-SY168	VAVOS-PAC-SY168-NA	VA-ED-004-7006	<a href="#">106</a>	VA-ED-004-7007	<a href="#">107</a>
CBA730-SR60(CW)	A	P-SR-M-FR-SV-1oo1-X-X	1/2"	1/2" (.065 WT)	5.5	4	VAVOS-PAC-SY169	VAVOS-PAC-SY169-NA	VA-ED-004-7177	<a href="#">108</a>	VA-ED-004-7178	<a href="#">109</a>
CBA730-SR60(CW)	C	P-SR-M-FR-SV-1oo1-S-VB	1/2" for DVC with 1/2" VB	1/2" (.065 WT)	5.5	2.5	VAVOS-PAC-SY170	VAVOS-PAC-SY170-NA	VA-ED-004-8742	<a href="#">110</a>	VA-ED-004-7429	<a href="#">111</a>
CBA730-SR60(CW)	D	P-SR-M-FR-SV-1oo1-X-QEV	1/4" with 1/4" QEV	3/8" (.049WT)	14.5	1.5	VAVOS-PAC-SY171	VAVOS-PAC-SY171-NA	VA-ED-004-8551	<a href="#">112</a>	VA-ED-004-7979	<a href="#">113</a>
CBA730-SR60(CW)	D	P-SR-M-FR-SV-1oo1-X-QEV	1/2" with 1/4" QEV	1/2" (.065 WT)	5	1.5	VAVOS-PAC-SY172	VAVOS-PAC-SY172-NA	VA-ED-004-8439	<a href="#">114</a>	VA-ED-004-7972	<a href="#">115</a>
CBA930-SR60(CW)	A	P-SR-M-FR-SV-1oo1-X-X	1/4"	3/8" (.049WT)	18.5	13.5	VAVOS-PAC-SY173	VAVOS-PAC-SY173-NA	VA-ED-004-7037	<a href="#">116</a>	VA-ED-004-7038	<a href="#">117</a>
CBA930-SR60(CW)	A	P-SR-M-FR-SV-1oo1-X-X	1/2"	1/2" (.065 WT)	7	5	VAVOS-PAC-SY174	VAVOS-PAC-SY174-NA	VA-ED-004-8749	<a href="#">118</a>	VA-ED-004-7933	<a href="#">119</a>
CBA930-SR60(CW)	C	P-SR-M-FR-SV-1oo1-S-VB	1/2" for DVC with 1/2" VB	1/2" (.065 WT)	7	3	VAVOS-PAC-SY175	VAVOS-PAC-SY175-NA	VA-ED-004-8743	<a href="#">120</a>	VA-ED-004-7430	<a href="#">121</a>
CBA930-SR60(CW)	D	P-SR-M-FR-SV-1oo1-X-QEV	1/4" with 1/4" QEV	3/8" (.049WT)	18.5	2	VAVOS-PAC-SY176	VAVOS-PAC-SY176-NA	VA-ED-004-8557	<a href="#">122</a>	VA-ED-004-7980	<a href="#">123</a>
CBA930-SR60(CW)	D	P-SR-M-FR-SV-1oo1-X-QEV	1/2" with 1/4" QEV	1/2" (.065 WT)	6.5	2	VAVOS-PAC-SY177	VAVOS-PAC-SY177-NA	VA-ED-004-8440	<a href="#">124</a>	VA-ED-004-7973	<a href="#">125</a>

CONFIGURATION

CONTROL TYPE	A Shutdown for Small Torque Range							
	P	SR	M	FR	SV	1oo1	X	X
P	Pneumatic				SV			Solenoid Valve
SR	Spring Return				1oo1			1 out of 1
M	Modular			X			X	
FR	Filter Regulator		X				X	

CONTROL TYPE	C Shutdown with Smart Positioner							
	P	SR	M	FR	SV	1oo1	SP	VB
P	Pneumatic				SV			Solenoid Valve
SR	Spring Return				1oo1			1 out of 1
M	Modular				SP			Smart Positioner
FR	Filter Regulator				VB			Volume Booster

CONTROL TYPE	D Fast Shutdown through Quick Exhaust Valve							
	P	SR	M	FR	SV	1oo1	X	QEV
P	Pneumatic				SV			Solenoid Valve
SR	Spring Return				1oo1			1 out of 1
M	Modular			X			X	
FR	Filter Regulator				QEV			Quick Exhaust Valve



# G-Series Double Acting

G-SERIES  
DOUBLE ACTING

Actuator Model	Control Type	Controls Code	Modular Control System Size & Description	Tubing Size	Air Stroke CCW (Sec)	Air Stroke CW (Sec)	VOS-PAC Number (ATEX/IECEX)	VOS-PAC Number (UL/FM/CSA)	General Assembly Drawing	Page	Piping Schematic	Page
G01010	E	P-DA-M-FR-SV-1oo1-X-X	1/2"	1/2" (.065 WT)	5	4.5	VAVOS-PAC-SY118	VAVOS-PAC-SY118-NA	VA-ED-004-8448	<a href="#">126</a>	VA-ED-004-8004	<a href="#">127</a>
G2012	E	P-DA-M-FR-SV-1oo1-X-X	1/2"	1/2" (.065 WT)	7.5	6	VAVOS-PAC-SY120	VAVOS-PAC-SY120-NA	VA-ED-004-8425	<a href="#">128</a>	VA-ED-004-8012	<a href="#">129</a>
G3014	E	P-DA-M-FR-SV-1oo1-X-X	1/2"	1/2" (.065 WT)	10.5	10	VAVOS-PAC-SY122	VAVOS-PAC-SY122-NA	VA-ED-004-8384	<a href="#">130</a>	VA-ED-004-8013	<a href="#">131</a>
G3016	E	P-DA-M-FR-SV-1oo1-X-X	1/2"	1/2" (.065 WT)	14	12.5	VAVOS-PAC-SY124	VAVOS-PAC-SY124-NA	VA-ED-004-8376	<a href="#">132</a>	VA-ED-004-8014	<a href="#">133</a>
G4016	E	P-DA-M-FR-SV-1oo1-X-X	1/2"	1/2" (.065 WT)	16.5	16	VAVOS-PAC-SY126	VAVOS-PAC-SY126-NA	VA-ED-004-8307	<a href="#">134</a>	VA-ED-004-8015	<a href="#">135</a>
G4020	E	P-DA-M-FR-SV-1oo1-X-X	1/2"	1/2" (.065 WT)	26	21	VAVOS-PAC-SY128	VAVOS-PAC-SY128-NA	VA-ED-004-8377	<a href="#">136</a>	VA-ED-004-8016	<a href="#">137</a>
G01010	F	P-DA-M-FR-SV-1oo1-X-PV	1/2" Pilot Valve	3/4" (.065 WT)	2	2	VAVOS-PAC-SY119	VAVOS-PAC-SY119-NA	VA-ED-004-8886	<a href="#">138</a>	VA-ED-004-8009	<a href="#">139</a>
G2012	F	P-DA-M-FR-SV-1oo1-X-PV	1/2" Pilot Valve	3/4" (.065 WT)	2.5	2.5	VAVOS-PAC-SY121	VAVOS-PAC-SY121-NA	VA-ED-004-8887	<a href="#">140</a>	VA-ED-004-8029	<a href="#">141</a>
G3014	F	P-DA-M-FR-SV-1oo1-X-PV	1/2" Pilot Valve	3/4" (.065 WT)	3.5	4	VAVOS-PAC-SY123	VAVOS-PAC-SY123-NA	VA-ED-004-8888	<a href="#">142</a>	VA-ED-004-8030	<a href="#">143</a>
G3016	F	P-DA-M-FR-SV-1oo1-X-PV	1/2" Pilot Valve	3/4" (.065 WT)	4.5	5	VAVOS-PAC-SY125	VAVOS-PAC-SY125-NA	VA-ED-004-8889	<a href="#">144</a>	VA-ED-004-8031	<a href="#">145</a>
G4016	F	P-DA-M-FR-SV-1oo1-X-PV	1/2" Pilot Valve	3/4" (.065 WT)	5.5	6	VAVOS-PAC-SY127	VAVOS-PAC-SY127-NA	VA-ED-004-8890	<a href="#">146</a>	VA-ED-004-8032	<a href="#">147</a>
G4020	F	P-DA-M-FR-SV-1oo1-X-PV	1/2" Pilot Valve	3/4" (.065 WT)	8	8	VAVOS-PAC-SY129	VAVOS-PAC-SY129-NA	VA-ED-004-8891	<a href="#">148</a>	VA-ED-004-8033	<a href="#">149</a>
G5020	E	P-DA-M-FR-SV-1oo1-X-X	1/2"	1/2" (.065 WT)	30	33	VAVOS-PAC-SY130	VAVOS-PAC-SY130-NA	VA-ED-004-8387	<a href="#">150</a>	VA-ED-004-8017	<a href="#">151</a>
G5024	E	P-DA-M-FR-SV-1oo1-X-X	1/2"	1/2" (.065 WT)	44	46.5	VAVOS-PAC-SY133	VAVOS-PAC-SY133-NA	VA-ED-004-8416	<a href="#">152</a>	VA-ED-004-8018	<a href="#">153</a>
G5020	F	P-DA-M-FR-SV-1oo1-X-PV	1/2" Pilot Valve	3/4" (.065 WT)	10.5	12	VAVOS-PAC-SY131	VAVOS-PAC-SY131-NA	VA-ED-004-8892	<a href="#">154</a>	VA-ED-004-8034	<a href="#">155</a>
G5024	F	P-DA-M-FR-SV-1oo1-X-PV	1/2" Pilot Valve	3/4" (.065 WT)	15	17	VAVOS-PAC-SY134	VAVOS-PAC-SY134-NA	VA-ED-004-8893	<a href="#">156</a>	VA-ED-004-8035	<a href="#">157</a>
G5020	F	P-DA-M-FR-SV-1oo1-X-PV	1" Pilot Valve	1" (.083WT)	5.5	5	VAVOS-PAC-SY132	VAVOS-PAC-SY132-NA	VA-ED-004-8883	<a href="#">158</a>	VA-ED-004-8041	<a href="#">159</a>
G5024	F	P-DA-M-FR-SV-1oo1-X-PV	1" Pilot Valve	1" (.083WT)	7.5	7	VAVOS-PAC-SY135	VAVOS-PAC-SY135-NA	VA-ED-004-8866	<a href="#">160</a>	VA-ED-004-8042	<a href="#">161</a>
G5028	F	P-DA-M-FR-SV-1oo1-X-PV	1" Pilot Valve	1" (.083WT)	11	9.5	VAVOS-PAC-SY136	VAVOS-PAC-SY136-NA	VA-ED-004-8884	<a href="#">162</a>	VA-ED-004-8043	<a href="#">163</a>
G7028	F	P-DA-M-FR-SV-1oo1-X-PV	1" Pilot Valve	1" (.083WT)	13.5	12	VAVOS-PAC-SY137	VAVOS-PAC-SY137-NA	VA-ED-004-8874	<a href="#">164</a>	VA-ED-004-8044	<a href="#">165</a>
G8036	F	P-DA-M-FR-SV-1oo1-X-PV	1" Pilot Valve	1" (.083WT)	25	28	VAVOS-PAC-SY138	VAVOS-PAC-SY138-NA	VA-ED-004-8885	<a href="#">166</a>	VA-ED-004-8045	<a href="#">167</a>
G8040	F	P-DA-M-FR-SV-1oo1-X-PV	1" Pilot Valve	1" (.083WT)	31	34.5	VAVOS-PAC-SY139	VAVOS-PAC-SY139-NA	VA-ED-004-8906	<a href="#">168</a>	VA-ED-004-8046	<a href="#">169</a>
G10040	F	P-DA-M-FR-SV-1oo1-X-PV	1" Pilot Valve	1" (.083WT)	39	42.5	VAVOS-PAC-SY140	VAVOS-PAC-SY140-NA	VA-ED-004-8805	<a href="#">170</a>	VA-ED-004-8047	<a href="#">171</a>

CONFIGURATION

CONTROL TYPE		E Shutdown for Small Torque Range						
P	DA	M	FR	SV	1oo1	X	X	
P	Pneumatic		SV	Solenoid Valve				
DA	Double Acting		1oo1	1 out of 1				
M	Modular		X	X				
FR	Filter Regulator		X	X				

CONTROL TYPE		F Shutdown for Large Torque Range						
P	DA	M	FR	SV	1oo1	X	PV	
P	Pneumatic		SV	Solenoid Valve				
DA	Double Acting		1oo1	1 out of 1				
M	Modular		X	X				
FR	Filter Regulator		PV	Pilot Valve				

# G-Series Double Acting

80  
psig

Actuator Model	Control Type	Controls Code	Modular Control System Size & Description	Tubing Size	Air Stroke CCW (Sec)	Air Stroke CW (Sec)	VOS-PAC Number (ATEX /IECEX)	VOS-PAC Number (UL/FM/CSA)	General Assembly Drawing	Page	Piping Schematic	Page
G01010	E	P-DA-M-FR-SV-1oo1-X-X	1/2"	1/2" (.065 WT)	5.5	5	VAVOS-PAC-SY258	VAVOS-PAC-SY258-NA	VA-ED-004-8448	<a href="#">126</a>	VA-ED-004-8004	<a href="#">127</a>
G2012	E	P-DA-M-FR-SV-1oo1-X-X	1/2"	1/2" (.065 WT)	8	7	VAVOS-PAC-SY260	VAVOS-PAC-SY260-NA	VA-ED-004-8425	<a href="#">128</a>	VA-ED-004-8012	<a href="#">129</a>
G3014	E	P-DA-M-FR-SV-1oo1-X-X	1/2"	1/2" (.065 WT)	12	11	VAVOS-PAC-SY262	VAVOS-PAC-SY262-NA	VA-ED-004-8384	<a href="#">130</a>	VA-ED-004-8013	<a href="#">131</a>
G3016	E	P-DA-M-FR-SV-1oo1-X-X	1/2"	1/2" (.065 WT)	15.5	14	VAVOS-PAC-SY264	VAVOS-PAC-SY264-NA	VA-ED-004-8376	<a href="#">132</a>	VA-ED-004-8014	<a href="#">133</a>
G4016	E	P-DA-M-FR-SV-1oo1-X-X	1/2"	1/2" (.065 WT)	18.5	17.5	VAVOS-PAC-SY266	VAVOS-PAC-SY266-NA	VA-ED-004-8307	<a href="#">134</a>	VA-ED-004-8015	<a href="#">135</a>
G4020	E	P-DA-M-FR-SV-1oo1-X-X	1/2"	1/2" (.065 WT)	29	23.5	VAVOS-PAC-SY268	VAVOS-PAC-SY268-NA	VA-ED-004-8377	<a href="#">136</a>	VA-ED-004-8016	<a href="#">137</a>
G01010	F	P-DA-M-FR-SV-1oo1-X-PV	1/2" Pilot Valve	3/4" (.065 WT)	2	2	VAVOS-PAC-SY259	VAVOS-PAC-SY259-NA	VA-ED-004-8886	<a href="#">138</a>	VA-ED-004-8009	<a href="#">139</a>
G2012	F	P-DA-M-FR-SV-1oo1-X-PV	1/2" Pilot Valve	3/4" (.065 WT)	2.5	3	VAVOS-PAC-SY261	VAVOS-PAC-SY261-NA	VA-ED-004-8887	<a href="#">140</a>	VA-ED-004-8029	<a href="#">141</a>
G3014	F	P-DA-M-FR-SV-1oo1-X-PV	1/2" Pilot Valve	3/4" (.065 WT)	4	4.5	VAVOS-PAC-SY263	VAVOS-PAC-SY263-NA	VA-ED-004-8888	<a href="#">142</a>	VA-ED-004-8030	<a href="#">143</a>
G3016	F	P-DA-M-FR-SV-1oo1-X-PV	1/2" Pilot Valve	3/4" (.065 WT)	5	5.5	VAVOS-PAC-SY265	VAVOS-PAC-SY265-NA	VA-ED-004-8889	<a href="#">144</a>	VA-ED-004-8031	<a href="#">145</a>
G4016	F	P-DA-M-FR-SV-1oo1-X-PV	1/2" Pilot Valve	3/4" (.065 WT)	6	7	VAVOS-PAC-SY267	VAVOS-PAC-SY267-NA	VA-ED-004-8890	<a href="#">146</a>	VA-ED-004-8032	<a href="#">147</a>
G4020	F	P-DA-M-FR-SV-1oo1-X-PV	1/2" Pilot Valve	3/4" (.065 WT)	9	9	VAVOS-PAC-SY269	VAVOS-PAC-SY269-NA	VA-ED-004-8891	<a href="#">148</a>	VA-ED-004-8033	<a href="#">149</a>
G5020	E	P-DA-M-FR-SV-1oo1-X-X	1/2"	1/2" (.065 WT)	33.5	36.5	VAVOS-PAC-SY270	VAVOS-PAC-SY270-NA	VA-ED-004-8387	<a href="#">150</a>	VA-ED-004-8017	<a href="#">151</a>
G5024	E	P-DA-M-FR-SV-1oo1-X-X	1/2"	1/2" (.065 WT)	49	52	VAVOS-PAC-SY273	VAVOS-PAC-SY273-NA	VA-ED-004-8416	<a href="#">152</a>	VA-ED-004-8018	<a href="#">153</a>
G5020	F	P-DA-M-FR-SV-1oo1-X-PV	1/2" Pilot Valve	3/4" (.065 WT)	11.5	13.5	VAVOS-PAC-SY271	VAVOS-PAC-SY271-NA	VA-ED-004-8892	<a href="#">154</a>	VA-ED-004-8034	<a href="#">155</a>
G5024	F	P-DA-M-FR-SV-1oo1-X-PV	1/2" Pilot Valve	3/4" (.065 WT)	17	19	VAVOS-PAC-SY274	VAVOS-PAC-SY274-NA	VA-ED-004-8893	<a href="#">156</a>	VA-ED-004-8035	<a href="#">157</a>
G5020	F	P-DA-M-FR-SV-1oo1-X-PV	1" Pilot Valve	1" (.083WT)	6	5.5	VAVOS-PAC-SY272	VAVOS-PAC-SY272-NA	VA-ED-004-8883	<a href="#">158</a>	VA-ED-004-8041	<a href="#">159</a>
G5024	F	P-DA-M-FR-SV-1oo1-X-PV	1" Pilot Valve	1" (.083WT)	8.5	8	VAVOS-PAC-SY275	VAVOS-PAC-SY275-NA	VA-ED-004-8866	<a href="#">160</a>	VA-ED-004-8042	<a href="#">161</a>
G5028	F	P-DA-M-FR-SV-1oo1-X-PV	1" Pilot Valve	1" (.083WT)	12	11	VAVOS-PAC-SY276	VAVOS-PAC-SY276-NA	VA-ED-004-8884	<a href="#">162</a>	VA-ED-004-8043	<a href="#">163</a>
G7028	F	P-DA-M-FR-SV-1oo1-X-PV	1" Pilot Valve	1" (.083WT)	15	13.5	VAVOS-PAC-SY277	VAVOS-PAC-SY277-NA	VA-ED-004-8874	<a href="#">164</a>	VA-ED-004-8044	<a href="#">165</a>
G8036	F	P-DA-M-FR-SV-1oo1-X-PV	1" Pilot Valve	1" (.083WT)	28	31	VAVOS-PAC-SY278	VAVOS-PAC-SY278-NA	VA-ED-004-8885	<a href="#">166</a>	VA-ED-004-8045	<a href="#">167</a>
G8040	F	P-DA-M-FR-SV-1oo1-X-PV	1" Pilot Valve	1" (.083WT)	34.5	38.5	VAVOS-PAC-SY279	VAVOS-PAC-SY279-NA	VA-ED-004-8906	<a href="#">168</a>	VA-ED-004-8046	<a href="#">169</a>
G10040	F	P-DA-M-FR-SV-1oo1-X-PV	1" Pilot Valve	1" (.083WT)	43.5	47.5	VAVOS-PAC-SY280	VAVOS-PAC-SY280-NA	VA-ED-004-8805	<a href="#">170</a>	VA-ED-004-8047	<a href="#">171</a>

CONFIGURATION

CONTROL TYPE		E Shutdown for Small Torque Range						
P	DA	M	FR	SV	1oo1	X	X	
P	Pneumatic	SV	Solenoid Valve					
DA	Double Acting	1oo1	1 out of 1					
M	Modular	X	X					
FR	Filter Regulator	X	X					

CONTROL TYPE		F Shutdown for Large Torque Range						
P	DA	M	FR	SV	1oo1	X	PV	
P	Pneumatic	SV	Solenoid Valve					
DA	Double Acting	1oo1	1 out of 1					
M	Modular	X	X					
FR	Filter Regulator	PV	Pilot Valve					

G-SERIES  
DOUBLEACTING

# G-Series Spring Return

G-SERIES  
SPRING RETURN

Actuator Model	Control Type	Controls Code	Modular Control System Size & Description	Tubing Size	Air Stroke (Sec)	Spring Stroke (Sec)	VOS-PAC Number (ATEX/IECEX)	VOS-PAC Number (UL/FM/CSA)	General Assembly Drawing	Page	Piping Schematic	Page
G01009-SR4(CW)	A	P-SR-M-FR-SV-1oo1-X-X	1/2"	1/2" (.065 WT)	4.5	3.5	VAVOS-PAC-SY038	VAVOS-PAC-SY038-NA	VA-ED-004-7228	<a href="#">172</a>	VA-ED-004-7229	<a href="#">173</a>
G01009-SR4(CW)	B	P-SR-M-FR-SV-1oo1-X-PV	1/2" Pilot Valve	3/4" (.065 WT)	1.5	1	VAVOS-PAC-SY039	VAVOS-PAC-SY039-NA	VA-ED-004-8056	<a href="#">174</a>	VA-ED-004-7937	<a href="#">175</a>
G01009-SR4(CW)	C	P-SR-M-FR-SV-1oo1-S-VB	1/2" for DVC with 3/4" VB	3/4" (.065 WT)	1.5	1	VAVOS-PAC-SY040	VAVOS-PAC-SY040-NA	VA-ED-004-7564	<a href="#">176</a>	VA-ED-004-7473	<a href="#">177</a>
G01009-SR4(CW)	D	P-SR-M-FR-SV-1oo1-X-QEV	1/2" with 1/4" QEV	1/2" (.065 WT)	4.5	1.5	VAVOS-PAC-SY041	VAVOS-PAC-SY041-NA	VA-ED-004-8189	<a href="#">178</a>	VA-ED-004-7982	<a href="#">179</a>
G01009-SR4(CW)	D	P-SR-M-FR-SV-1oo1-X-QEV	1/2" with 1/2" QEV	3/4" (.065 WT)	3	0.5	VAVOS-PAC-SY042	VAVOS-PAC-SY042-NA	VA-ED-004-8299	<a href="#">180</a>	VA-ED-004-8095	<a href="#">181</a>
G01010-SR4(CW)	A	P-SR-M-FR-SV-1oo1-X-X	1/2"	1/2" (.065 WT)	5.5	4.5	VAVOS-PAC-SY043	VAVOS-PAC-SY043-NA	VA-ED-004-7223	<a href="#">182</a>	VA-ED-004-7224	<a href="#">183</a>
G01010-SR4(CW)	B	P-SR-M-FR-SV-1oo1-X-PV	1/2" Pilot Valve	3/4" (.065 WT)	2	1.5	VAVOS-PAC-SY044	VAVOS-PAC-SY044-NA	VA-ED-004-8083	<a href="#">184</a>	VA-ED-004-7938	<a href="#">185</a>
G01010-SR4(CW)	C	P-SR-M-FR-SV-1oo1-S-VB	1/2" for DVC with 3/4" VB	3/4" (.065 WT)	2	1.5	VAVOS-PAC-SY045	VAVOS-PAC-SY045-NA	VA-ED-004-7614	<a href="#">186</a>	VA-ED-004-7478	<a href="#">187</a>
G01010-SR4(CW)	D	P-SR-M-FR-SV-1oo1-X-QEV	1/2" with 1/4" QEV	1/2" (.065 WT)	6.5	2.5	VAVOS-PAC-SY046	VAVOS-PAC-SY046-NA	VA-ED-004-8193	<a href="#">188</a>	VA-ED-004-7983	<a href="#">189</a>
G01010-SR4(CW)	D	P-SR-M-FR-SV-1oo1-X-QEV	1/2" with 1/2" QEV	3/4" (.065 WT)	4	1	VAVOS-PAC-SY047	VAVOS-PAC-SY047-NA	VA-ED-004-8298	<a href="#">190</a>	VA-ED-004-8096	<a href="#">191</a>
G01012-SR4(CW)	A	P-SR-M-FR-SV-1oo1-X-X	1/2"	1/2" (.065 WT)	8	6.5	VAVOS-PAC-SY048	VAVOS-PAC-SY048-NA	VA-ED-004-7208	<a href="#">192</a>	VA-ED-004-7209	<a href="#">193</a>
G01012-SR4(CW)	B	P-SR-M-FR-SV-1oo1-X-PV	1/2" Pilot Valve	3/4" (.065 WT)	2.5	2	VAVOS-PAC-SY049	VAVOS-PAC-SY049-NA	VA-ED-004-8084	<a href="#">194</a>	VA-ED-004-7939	<a href="#">195</a>
G01012-SR4(CW)	C	P-SR-M-FR-SV-1oo1-S-VB	1/2" for DVC with 3/4" VB	3/4" (.065 WT)	3	2	VAVOS-PAC-SY050	VAVOS-PAC-SY050-NA	VA-ED-004-7682	<a href="#">196</a>	VA-ED-004-7479	<a href="#">197</a>
G01012-SR4(CW)	D	P-SR-M-FR-SV-1oo1-X-QEV	1/2" with 1/4" QEV	1/2" (.065 WT)	9	3.5	VAVOS-PAC-SY051	VAVOS-PAC-SY051-NA	VA-ED-004-8202	<a href="#">198</a>	VA-ED-004-7984	<a href="#">199</a>
G01012-SR4(CW)	D	P-SR-M-FR-SV-1oo1-X-QEV	1/2" with 1/2" QEV	3/4" (.065 WT)	6	1.5	VAVOS-PAC-SY052	VAVOS-PAC-SY052-NA	VA-ED-004-8297	<a href="#">200</a>	VA-ED-004-8097	<a href="#">201</a>
G2014-SR4(CW)	A	P-SR-M-FR-SV-1oo1-X-X	1/2"	1/2" (.065 WT)	9.5	8	VAVOS-PAC-SY053	VAVOS-PAC-SY053-NA	VA-ED-004-7190	<a href="#">202</a>	VA-ED-004-7191	<a href="#">203</a>
G2014-SR4(CW)	B	P-SR-M-FR-SV-1oo1-X-PV	1/2" Pilot Valve	3/4" (.065 WT)	3	2.5	VAVOS-PAC-SY054	VAVOS-PAC-SY054-NA	VA-ED-004-8085	<a href="#">204</a>	VA-ED-004-7940	<a href="#">205</a>
G2014-SR4(CW)	C	P-SR-M-FR-SV-1oo1-S-VB	1/2" for DVC with 3/4" VB	3/4" (.065 WT)	3.5	2.5	VAVOS-PAC-SY055	VAVOS-PAC-SY055-NA	VA-ED-004-7340	<a href="#">206</a>	VA-ED-004-7341	<a href="#">207</a>
G2014-SR4(CW)	D	P-SR-M-FR-SV-1oo1-X-QEV	1/2" with 1/4" QEV	1/2" (.065 WT)	11	4.5	VAVOS-PAC-SY056	VAVOS-PAC-SY056-NA	VA-ED-004-8238	<a href="#">208</a>	VA-ED-004-7985	<a href="#">209</a>
G2014-SR4(CW)	D	P-SR-M-FR-SV-1oo1-X-QEV	1/2" with 1/2" QEV	3/4" (.065 WT)	7	1.5	VAVOS-PAC-SY057	VAVOS-PAC-SY057-NA	VA-ED-004-8296	<a href="#">210</a>	VA-ED-004-8098	<a href="#">211</a>
G3016-SR2(CW)	A	P-SR-M-FR-SV-1oo1-X-X	1/2"	1/2" (.065 WT)	15.5	12.5	VAVOS-PAC-SY058	VAVOS-PAC-SY058-NA	VA-ED-004-7143	<a href="#">212</a>	VA-ED-004-7144	<a href="#">213</a>
G3016-SR2(CW)	B	P-SR-M-FR-SV-1oo1-X-PV	1/2" Pilot Valve	3/4" (.065 WT)	5	4	VAVOS-PAC-SY059	VAVOS-PAC-SY059-NA	VA-ED-004-8059	<a href="#">214</a>	VA-ED-004-7942	<a href="#">215</a>
G3016-SR2(CW)	C	P-SR-M-FR-SV-1oo1-S-VB	1/2" for DVC with 3/4" VB	3/4" (.065 WT)	5.5	4	VAVOS-PAC-SY060	VAVOS-PAC-SY060-NA	VA-ED-004-7694	<a href="#">216</a>	VA-ED-004-7480	<a href="#">217</a>
G3016-SR2(CW)	D	P-SR-M-FR-SV-1oo1-X-QEV	1/2" with 1/4" QEV	1/2" (.065 WT)	17.5	6.5	VAVOS-PAC-SY061	VAVOS-PAC-SY061-NA	VA-ED-004-8022	<a href="#">218</a>	VA-ED-004-7986	<a href="#">219</a>
G3016-SR2(CW)	D	P-SR-M-FR-SV-1oo1-X-QEV	1/2" with 1/2" QEV	3/4" (.065 WT)	11	2.5	VAVOS-PAC-SY062	VAVOS-PAC-SY062-NA	VA-ED-004-8295	<a href="#">220</a>	VA-ED-004-8099	<a href="#">221</a>
G3016-SR4(CW)	A	P-SR-M-FR-SV-1oo1-X-X	1/2"	1/2" (.065 WT)	15.5	12.5	VAVOS-PAC-SY063	VAVOS-PAC-SY063-NA	VA-ED-004-7247	<a href="#">222</a>	VA-ED-004-7248	<a href="#">223</a>
G3016-SR4(CW)	B	P-SR-M-FR-SV-1oo1-X-PV	1/2" Pilot Valve	3/4" (.065 WT)	5	4	VAVOS-PAC-SY064	VAVOS-PAC-SY064-NA	VA-ED-004-8086	<a href="#">224</a>	VA-ED-004-7943	<a href="#">225</a>
G3016-SR4(CW)	C	P-SR-M-FR-SV-1oo1-S-VB	1/2" for DVC with 3/4" VB	3/4" (.065 WT)	5.5	4	VAVOS-PAC-SY065	VAVOS-PAC-SY065-NA	VA-ED-004-7716	<a href="#">226</a>	VA-ED-004-7481	<a href="#">227</a>
G3016-SR4(CW)	D	P-SR-M-FR-SV-1oo1-X-QEV	1/2" with 1/4" QEV	1/2" (.065 WT)	17.5	6.5	VAVOS-PAC-SY066	VAVOS-PAC-SY066-NA	VA-ED-004-8266	<a href="#">228</a>	VA-ED-004-7987	<a href="#">229</a>
G3016-SR4(CW)	D	P-SR-M-FR-SV-1oo1-X-QEV	1/2" with 1/2" QEV	3/4" (.065 WT)	11	2.5	VAVOS-PAC-SY067	VAVOS-PAC-SY067-NA	VA-ED-004-8201	<a href="#">230</a>	VA-ED-004-8100	<a href="#">231</a>
G4020-SR2(CW)	A	P-SR-M-FR-SV-1oo1-X-X	1/2"	1/2" (.065 WT)	27.5	22	VAVOS-PAC-SY068	VAVOS-PAC-SY068-NA	VA-ED-004-7205	<a href="#">232</a>	VA-ED-004-7206	<a href="#">233</a>
G4020-SR2(CW)	B	P-SR-M-FR-SV-1oo1-X-PV	1/2" Pilot Valve	3/4" (.065 WT)	9	7.5	VAVOS-PAC-SY069	VAVOS-PAC-SY069-NA	VA-ED-004-8087	<a href="#">234</a>	VA-ED-004-7944	<a href="#">235</a>
G4020-SR2(CW)	C	P-SR-M-FR-SV-1oo1-S-VB	1/2" for DVC with 3/4" VB	3/4" (.065 WT)	10	7	VAVOS-PAC-SY070	VAVOS-PAC-SY070-NA	VA-ED-004-7713	<a href="#">236</a>	VA-ED-004-7482	<a href="#">237</a>
G4020-SR2(CW)	D	P-SR-M-FR-SV-1oo1-X-QEV	1/2" with 1/4" QEV	1/2" (.065 WT)	32.5	12.5	VAVOS-PAC-SY071	VAVOS-PAC-SY071-NA	VA-ED-004-8270	<a href="#">238</a>	VA-ED-004-7988	<a href="#">239</a>
G4020-SR2(CW)	D	P-SR-M-FR-SV-1oo1-X-QEV	1/2" with 1/2" QEV	3/4" (.065 WT)	20.5	4	VAVOS-PAC-SY072	VAVOS-PAC-SY072-NA	VA-ED-004-8248	<a href="#">240</a>	VA-ED-004-8101	<a href="#">241</a>

CONFIGURATION

CONTROL TYPE	A Shutdown for Small Torque Range							
	P	SR	M	FR	SV	1oo1	X	X
P	Pneumatic				SV			Solenoid Valve
SR	Spring Return				1oo1			1 out of 1
M	Modular			X	X			
FR	Filter Regulator			X	X			

CONTROL TYPE	B Shutdown for Large Torque Range							
	P	SR	M	FR	SV	1oo1	X	PV
P	Pneumatic				SV			Solenoid Valve
SR	Spring Return				1oo1			1 out of 1
M	Modular			X	X			
FR	Filter Regulator				PV			Pilot Valve

CONTROL TYPE	C Shutdown with Smart Positioner							
	P	SR	M	FR	SV	1oo1	SP	VB
P	Pneumatic				SV			Solenoid Valve
SR	Spring Return				1oo1			1 out of 1
M	Modular				SP			Smart Positioner
FR	Filter Regulator				VB			Volume Booster

CONTROL TYPE	D Fast Shutdown through Quick Exhaust Valve							
	P	SR	M	FR	SV	1oo1	X	QEV
P	Pneumatic				SV			Solenoid Valve
SR	Spring Return				1oo1			1 out of 1
M	Modular			X	X			
FR	Filter Regulator				QEV			Quick Exhaust Valve

# G-Series Spring Return (continued)

Actuator Model	Control Type	Controls Code	Modular Control System Size & Description	Tubing Size	Air Stroke (Sec)	Spring Stroke (Sec)	VOS-PAC Number (ATEX/IECEX)	VOS-PAC Number (UL/FM/CSA)	General Assembly Drawing	Page	Piping Schematic	Page
G4020-SR4(CW)	A	P-SR-M-FR-SV-1oo1-X-X	1/2"	1/2" (.065 WT)	27.5	22	VAVOS-PAC-SY073	VAVOS-PAC-SY073-NA	VA-ED-004-7931	242	VA-ED-004-7932	243
G4020-SR4(CW)	B	P-SR-M-FR-SV-1oo1-X-PV	1/2" Pilot Valve	3/4" (.065 WT)	9	7.5	VAVOS-PAC-SY074	VAVOS-PAC-SY074-NA	VA-ED-004-8088	244	VA-ED-004-7945	245
G4020-SR4(CW)	C	P-SR-M-FR-SV-1oo1-S-VB	1/2" for DVC with 3/4" VB	3/4" (.065 WT)	10	7	VAVOS-PAC-SY075	VAVOS-PAC-SY075-NA	VA-ED-004-7712	246	VA-ED-004-7483	247
G4020-SR4(CW)	D	P-SR-M-FR-SV-1oo1-X-QEV	1/2" with 1/4" QEV	1/2" (.065 WT)	32.5	12.5	VAVOS-PAC-SY076	VAVOS-PAC-SY076-NA	VA-ED-004-8284	248	VA-ED-004-7989	249
G4020-SR4(CW)	D	P-SR-M-FR-SV-1oo1-X-QEV	1/2" with 1/2" QEV	3/4" (.065 WT)	20.5	4	VAVOS-PAC-SY077	VAVOS-PAC-SY077-NA	VA-ED-004-8262	250	VA-ED-004-8102	251
G5024-SR4(CW)	B	P-SR-M-FR-SV-1oo1-X-PV	1/2" Pilot Valve	3/4" (.065 WT)	17	13.5	VAVOS-PAC-SY078	VAVOS-PAC-SY078-NA	VA-ED-004-8089	252	VA-ED-004-7946	253
G5024-SR4(CW)	B	P-SR-M-FR-SV-1oo1-X-PV	1" Pilot Valve	1" (.083WT)	7	5.5	VAVOS-PAC-SY079	VAVOS-PAC-SY079-NA	VA-ED-004-8894	254	VA-ED-004-8129	255
G5024-SR4(CW)	C	P-SR-M-FR-SV-1oo1-S-VB	1/2" for DVC with 3/4" VB	3/4" (.065 WT)	19	11.5	VAVOS-PAC-SY080	VAVOS-PAC-SY080-NA	VA-ED-004-7711	256	VA-ED-004-7484	257
G5024-SR4(CW)	C	P-SR-M-FR-SV-1oo1-S-VB	1/2" for DVC with 1" VB	1" (.083WT)	12.5	7	VAVOS-PAC-SY081	VAVOS-PAC-SY081-NA	VA-ED-004-7651	258	VA-ED-004-7490	259
G5024-SR4(CW)	D	P-SR-M-FR-SV-1oo1-X-QEV	1/2" with 1/2" QEV	3/4" (.065 WT)	38	7.5	VAVOS-PAC-SY082	VAVOS-PAC-SY082-NA	VA-ED-004-8264	260	VA-ED-004-8103	261
G5024-SR4(CW)	D	P-SR-M-FR-SV-1oo1-X-QEV	1/2" with 3/4" QEV	1" (.083WT)	36	4.5	VAVOS-PAC-SY083	VAVOS-PAC-SY083-NA	VA-ED-004-8237	262	VA-ED-004-8107	263
G5028-SR2(CW)	B	P-SR-M-FR-SV-1oo1-X-PV	1/2" Pilot Valve	3/4" (.065 WT)	24	19	VAVOS-PAC-SY084	VAVOS-PAC-SY084-NA	VA-ED-004-8090	264	VA-ED-004-7947	265
G5028-SR2(CW)	B	P-SR-M-FR-SV-1oo1-X-PV	1" Pilot Valve	1" (.083WT)	9.5	8	VAVOS-PAC-SY085	VAVOS-PAC-SY085-NA	VA-ED-004-8895	266	VA-ED-004-8130	267
G5028-SR2(CW)	C	P-SR-M-FR-SV-1oo1-S-VB	1/2" for DVC with 3/4" VB	3/4" (.065 WT)	26.5	16.5	VAVOS-PAC-SY086	VAVOS-PAC-SY086-NA	VA-ED-004-7708	268	VA-ED-004-7485	269
G5028-SR2(CW)	C	P-SR-M-FR-SV-1oo1-S-VB	1/2" for DVC with 1" VB	1" (.083WT)	17.5	9.5	VAVOS-PAC-SY087	VAVOS-PAC-SY087-NA	VA-ED-004-7650	270	VA-ED-004-7491	271
G5028-SR2(CW)	D	P-SR-M-FR-SV-1oo1-X-QEV	1/2" with 1/2" QEV	3/4" (.065 WT)	54	10.5	VAVOS-PAC-SY088	VAVOS-PAC-SY088-NA	VA-ED-004-8268	272	VA-ED-004-8104	273
G5028-SR2(CW)	D	P-SR-M-FR-SV-1oo1-X-QEV	1/2" with 3/4" QEV	1" (.083WT)	50.5	6	VAVOS-PAC-SY089	VAVOS-PAC-SY089-NA	VA-ED-004-8246	274	VA-ED-004-8108	275
G5028-SR4(CW)	B	P-SR-M-FR-SV-1oo1-X-PV	1/2" Pilot Valve	3/4" (.065 WT)	24	19	VAVOS-PAC-SY090	VAVOS-PAC-SY090-NA	VA-ED-004-8074	276	VA-ED-004-7948	277
G5028-SR4(CW)	B	P-SR-M-FR-SV-1oo1-X-PV	1" Pilot Valve	1" (.083WT)	9.5	8	VAVOS-PAC-SY091	VAVOS-PAC-SY091-NA	VA-ED-004-8896	278	VA-ED-004-8132	279
G5028-SR4(CW)	C	P-SR-M-FR-SV-1oo1-S-VB	1/2" for DVC with 3/4" VB	3/4" (.065 WT)	26.5	16.5	VAVOS-PAC-SY092	VAVOS-PAC-SY092-NA	VA-ED-004-7707	280	VA-ED-004-7486	281
G5028-SR4(CW)	C	P-SR-M-FR-SV-1oo1-S-VB	1/2" for DVC with 1" VB	1" (.083WT)	17.5	9.5	VAVOS-PAC-SY093	VAVOS-PAC-SY093-NA	VA-ED-004-7637	282	VA-ED-004-7492	283
G5028-SR4(CW)	D	P-SR-M-FR-SV-1oo1-X-QEV	1/2" with 1/2" QEV	3/4" (.065 WT)	54	10.5	VAVOS-PAC-SY094	VAVOS-PAC-SY094-NA	VA-ED-004-8273	284	VA-ED-004-8105	285
G5028-SR4(CW)	D	P-SR-M-FR-SV-1oo1-X-QEV	1/2" with 3/4" QEV	1" (.083WT)	50.5	6	VAVOS-PAC-SY095	VAVOS-PAC-SY095-NA	VA-ED-004-8250	286	VA-ED-004-8109	287
G7028-SR4(CW)	B	P-SR-M-FR-SV-1oo1-X-PV	1" Pilot Valve	1" (.083WT)	12	10	VAVOS-PAC-SY096	VAVOS-PAC-SY096-NA	VA-ED-004-8897	288	VA-ED-004-8133	289
G7028-SR4(CW)	C	P-SR-M-FR-SV-1oo1-S-VB	1/2" for DVC with 1" VB	1" (.083WT)	21.5	14.5	VAVOS-PAC-SY097	VAVOS-PAC-SY097-NA	VA-ED-004-7574	290	VA-ED-004-7493	291
G7028-SR4(CW)	D	P-SR-M-FR-SV-1oo1-X-QEV	1/2" with 3/4" QEV	1" (.083WT)	63	7.5	VAVOS-PAC-SY098	VAVOS-PAC-SY098-NA	VA-ED-004-8256	292	VA-ED-004-8110	293
G7032-SR4(CW)	B	P-SR-M-FR-SV-1oo1-X-PV	1" Pilot Valve	1" (.083WT)	15	12	VAVOS-PAC-SY099	VAVOS-PAC-SY099-NA	VA-ED-004-8899	294	VA-ED-004-8134	295
G7032-SR4(CW)	C	P-SR-M-FR-SV-1oo1-S-VB	1/2" for DVC with 1" VB	1" (.083WT)	27	14.5	VAVOS-PAC-SY100	VAVOS-PAC-SY100-NA	VA-ED-004-7635	296	VA-ED-004-7494	297
G7032-SR4(CW)	D	P-SR-M-FR-SV-1oo1-X-QEV	1/2" with 3/4" QEV	1" (.083WT)	78.5	9.5	VAVOS-PAC-SY101	VAVOS-PAC-SY101-NA	VA-ED-004-8258	298	VA-ED-004-8111	299
G8036-SR3(CW)	B	P-SR-M-FR-SV-1oo1-X-PV	1" Pilot Valve	1" (.083WT)	22.5	18.5	VAVOS-PAC-SY102	VAVOS-PAC-SY102-NA	VA-ED-004-8900	300	VA-ED-004-8135	301
G8036-SR3(CW)	C	P-SR-M-FR-SV-1oo1-S-VB	1/2" for DVC with 1" VB	1" (.083WT)	38.5	19.5	VAVOS-PAC-SY103	VAVOS-PAC-SY103-NA	VA-ED-004-7684	302	VA-ED-004-7495	303
G8036-SR3(CW)	D	P-SR-M-FR-SV-1oo1-X-QEV	1/2" with 3/4" QEV	1" (.083WT)	117.5	13.5	VAVOS-PAC-SY104	VAVOS-PAC-SY104-NA	VA-ED-004-8289	304	VA-ED-004-8112	305
G10040-SR4(CW)	B	P-SR-M-FR-SV-1oo1-X-PV	1" Pilot Valve	1" (.083WT)	36.5	29.5	VAVOS-PAC-SY105	VAVOS-PAC-SY105-NA	VA-ED-004-8901	306	VA-ED-004-8136	307
G10040-SR4(CW)	C	P-SR-M-FR-SV-1oo1-S-VB	1/2" for DVC with 1" VB	1" (.083WT)	60.5	31	VAVOS-PAC-SY106	VAVOS-PAC-SY106-NA	VA-ED-004-7691	308	VA-ED-004-7496	309
G10040-SR4(CW)	D	P-SR-M-FR-SV-1oo1-X-QEV	1/2" with 3/4" QEV	1" (.083WT)	185	21.5	VAVOS-PAC-SY107	VAVOS-PAC-SY107-NA	VA-ED-004-8294	310	VA-ED-004-8113	311

G-SERIES  
SPRING RETURN

CONFIGURATION

CONTROL TYPE	A Shutdown for Small Torque Range						
	P	SR	M	FR	SV	1oo1	X X
P	Pneumatic				SV		Solenoid Valve
SR	Spring Return				1oo1		1 out of 1
M	Modular		X		X		
FR	Filter Regulator		X		X		

CONTROL TYPE	B Shutdown for Large Torque Range						
	P	SR	M	FR	SV	1oo1	X PV
P	Pneumatic				SV		Solenoid Valve
SR	Spring Return				1oo1		1 out of 1
M	Modular		X		X		
FR	Filter Regulator				PV		Pilot Valve

CONTROL TYPE	C Shutdown with Smart Positioner						
	P	SR	M	FR	SV	1oo1	SP VB
P	Pneumatic				SV		Solenoid Valve
SR	Spring Return				1oo1		1 out of 1
M	Modular				SP		Smart Positioner
FR	Filter Regulator				VB		Volume Booster

CONTROL TYPE	D Fast Shutdown through Quick Exhaust Valve						
	P	SR	M	FR	SV	1oo1	X QEV
P	Pneumatic				SV		Solenoid Valve
SR	Spring Return				1oo1		1 out of 1
M	Modular		X		X		
FR	Filter Regulator				QEV		Quick Exhaust Valve



# G-Series Spring Return

Actuator Model	Control Type	Controls Code	Modular Control System Size & Description	Tubing Size	Air Stroke (Sec)	Spring Stroke (Sec)	VOS-PAC Number (ATEX /IECEX)	VOS-PAC Number (UL/FM/CSA)	General Assembly Drawing	Page	Piping Schematic	Page
G01009-SR4(CW)	A	P-SR-M-FR-SV-1oo1-X-X	1/2"	1/2" (.065 WT)	4.5	3.5	VAVOS-PAC-SY178	VAVOS-PAC-SY178-NA	VA-ED-004-7228	172	VA-ED-004-7229	173
G01009-SR4(CW)	B	P-SR-M-FR-SV-1oo1-X-PV	1/2" Pilot Valve	3/4" (.065 WT)	1.5	1	VAVOS-PAC-SY179	VAVOS-PAC-SY179-NA	VA-ED-004-8056	174	VA-ED-004-7937	175
G01009-SR4(CW)	C	P-SR-M-FR-SV-1oo1-S-VB	1/2" for DVC with 3/4" VB	3/4" (.065 WT)	1.5	1	VAVOS-PAC-SY180	VAVOS-PAC-SY180-NA	VA-ED-004-7564	176	VA-ED-004-7473	177
G01009-SR4(CW)	D	P-SR-M-FR-SV-1oo1-X-QEV	1/2" with 1/4" QEV	1/2" (.065 WT)	5	1	VAVOS-PAC-SY181	VAVOS-PAC-SY181-NA	VA-ED-004-8189	178	VA-ED-004-7982	179
G01009-SR4(CW)	D	P-SR-M-FR-SV-1oo1-X-QEV	1/2" with 1/2" QEV	3/4" (.065 WT)	3.5	0.5	VAVOS-PAC-SY182	VAVOS-PAC-SY182-NA	VA-ED-004-8299	180	VA-ED-004-8095	181
G01010-SR4(CW)	A	P-SR-M-FR-SV-1oo1-X-X	1/2"	1/2" (.065 WT)	6	4.5	VAVOS-PAC-SY183	VAVOS-PAC-SY183-NA	VA-ED-004-7223	182	VA-ED-004-7224	183
G01010-SR4(CW)	B	P-SR-M-FR-SV-1oo1-X-PV	1/2" Pilot Valve	3/4" (.065 WT)	2	1.5	VAVOS-PAC-SY184	VAVOS-PAC-SY184-NA	VA-ED-004-8083	184	VA-ED-004-7938	185
G01010-SR4(CW)	C	P-SR-M-FR-SV-1oo1-S-VB	1/2" for DVC with 3/4" VB	3/4" (.065 WT)	2.5	1.5	VAVOS-PAC-SY185	VAVOS-PAC-SY185-NA	VA-ED-004-7614	186	VA-ED-004-7478	187
G01010-SR4(CW)	D	P-SR-M-FR-SV-1oo1-X-QEV	1/2" with 1/4" QEV	1/2" (.065 WT)	7	1.5	VAVOS-PAC-SY186	VAVOS-PAC-SY186-NA	VA-ED-004-8193	188	VA-ED-004-7983	189
G01010-SR4(CW)	D	P-SR-M-FR-SV-1oo1-X-QEV	1/2" with 1/2" QEV	3/4" (.065 WT)	4.5	1	VAVOS-PAC-SY187	VAVOS-PAC-SY187-NA	VA-ED-004-8298	190	VA-ED-004-8096	191
G01012-SR4(CW)	A	P-SR-M-FR-SV-1oo1-X-X	1/2"	1/2" (.065 WT)	9	6.5	VAVOS-PAC-SY188	VAVOS-PAC-SY188-NA	VA-ED-004-7208	192	VA-ED-004-7209	193
G01012-SR4(CW)	B	P-SR-M-FR-SV-1oo1-X-PV	1/2" Pilot Valve	3/4" (.065 WT)	3	2	VAVOS-PAC-SY189	VAVOS-PAC-SY189-NA	VA-ED-004-8084	194	VA-ED-004-7939	195
G01012-SR4(CW)	C	P-SR-M-FR-SV-1oo1-S-VB	1/2" for DVC with 3/4" VB	3/4" (.065 WT)	3	2	VAVOS-PAC-SY190	VAVOS-PAC-SY190-NA	VA-ED-004-7682	196	VA-ED-004-7479	197
G01012-SR4(CW)	D	P-SR-M-FR-SV-1oo1-X-QEV	1/2" with 1/4" QEV	1/2" (.065 WT)	10	2	VAVOS-PAC-SY191	VAVOS-PAC-SY191-NA	VA-ED-004-8202	198	VA-ED-004-7984	199
G01012-SR4(CW)	D	P-SR-M-FR-SV-1oo1-X-QEV	1/2" with 1/2" QEV	3/4" (.065 WT)	6.5	1.5	VAVOS-PAC-SY192	VAVOS-PAC-SY192-NA	VA-ED-004-8297	200	VA-ED-004-8097	201
G2014-SR4(CW)	A	P-SR-M-FR-SV-1oo1-X-X	1/2"	1/2" (.065 WT)	11	8	VAVOS-PAC-SY193	VAVOS-PAC-SY193-NA	VA-ED-004-7190	202	VA-ED-004-7191	203
G2014-SR4(CW)	B	P-SR-M-FR-SV-1oo1-X-PV	1/2" Pilot Valve	3/4" (.065 WT)	3.5	2.5	VAVOS-PAC-SY194	VAVOS-PAC-SY194-NA	VA-ED-004-8085	204	VA-ED-004-7940	205
G2014-SR4(CW)	C	P-SR-M-FR-SV-1oo1-S-VB	1/2" for DVC with 3/4" VB	3/4" (.065 WT)	4	2.5	VAVOS-PAC-SY195	VAVOS-PAC-SY195-NA	VA-ED-004-7340	206	VA-ED-004-7341	207
G2014-SR4(CW)	D	P-SR-M-FR-SV-1oo1-X-QEV	1/2" with 1/4" QEV	1/2" (.065 WT)	12.5	3	VAVOS-PAC-SY196	VAVOS-PAC-SY196-NA	VA-ED-004-8238	208	VA-ED-004-7985	209
G2014-SR4(CW)	D	P-SR-M-FR-SV-1oo1-X-QEV	1/2" with 1/2" QEV	3/4" (.065 WT)	8	1.5	VAVOS-PAC-SY197	VAVOS-PAC-SY197-NA	VA-ED-004-8296	210	VA-ED-004-8098	211
G3016-SR2(CW)	A	P-SR-M-FR-SV-1oo1-X-X	1/2"	1/2" (.065 WT)	17	12.5	VAVOS-PAC-SY198	VAVOS-PAC-SY198-NA	VA-ED-004-7143	212	VA-ED-004-7144	213
G3016-SR2(CW)	B	P-SR-M-FR-SV-1oo1-X-PV	1/2" Pilot Valve	3/4" (.065 WT)	5.5	4	VAVOS-PAC-SY199	VAVOS-PAC-SY199-NA	VA-ED-004-8059	214	VA-ED-004-7942	215
G3016-SR2(CW)	C	P-SR-M-FR-SV-1oo1-S-VB	1/2" for DVC with 3/4" VB	3/4" (.065 WT)	6	4	VAVOS-PAC-SY200	VAVOS-PAC-SY200-NA	VA-ED-004-7694	216	VA-ED-004-7480	217
G3016-SR2(CW)	D	P-SR-M-FR-SV-1oo1-X-QEV	1/2" with 1/4" QEV	1/2" (.065 WT)	19.5	5	VAVOS-PAC-SY201	VAVOS-PAC-SY201-NA	VA-ED-004-8022	218	VA-ED-004-7986	219
G3016-SR2(CW)	D	P-SR-M-FR-SV-1oo1-X-QEV	1/2" with 1/2" QEV	3/4" (.065 WT)	12.5	2.5	VAVOS-PAC-SY202	VAVOS-PAC-SY202-NA	VA-ED-004-8295	220	VA-ED-004-8099	221
G3016-SR4(CW)	A	P-SR-M-FR-SV-1oo1-X-X	1/2"	1/2" (.065 WT)	17	12.5	VAVOS-PAC-SY203	VAVOS-PAC-SY203-NA	VA-ED-004-7247	222	VA-ED-004-7248	223
G3016-SR4(CW)	B	P-SR-M-FR-SV-1oo1-X-PV	1/2" Pilot Valve	3/4" (.065 WT)	5.5	4	VAVOS-PAC-SY204	VAVOS-PAC-SY204-NA	VA-ED-004-8086	224	VA-ED-004-7943	225
G3016-SR4(CW)	C	P-SR-M-FR-SV-1oo1-S-VB	1/2" for DVC with 3/4" VB	3/4" (.065 WT)	6	4	VAVOS-PAC-SY205	VAVOS-PAC-SY205-NA	VA-ED-004-7716	226	VA-ED-004-7481	227
G3016-SR4(CW)	D	P-SR-M-FR-SV-1oo1-X-QEV	1/2" with 1/4" QEV	1/2" (.065 WT)	19.5	5	VAVOS-PAC-SY206	VAVOS-PAC-SY206-NA	VA-ED-004-8266	228	VA-ED-004-7987	229
G3016-SR4(CW)	D	P-SR-M-FR-SV-1oo1-X-QEV	1/2" with 1/2" QEV	3/4" (.065 WT)	12.5	2.5	VAVOS-PAC-SY207	VAVOS-PAC-SY207-NA	VA-ED-004-8201	230	VA-ED-004-8100	231
G4020-SR2(CW)	A	P-SR-M-FR-SV-1oo1-X-X	1/2"	1/2" (.065 WT)	30.5	22	VAVOS-PAC-SY208	VAVOS-PAC-SY208-NA	VA-ED-004-7205	232	VA-ED-004-7206	233
G4020-SR2(CW)	B	P-SR-M-FR-SV-1oo1-X-PV	1/2" Pilot Valve	3/4" (.065 WT)	10	7.5	VAVOS-PAC-SY209	VAVOS-PAC-SY209-NA	VA-ED-004-8087	234	VA-ED-004-7944	235
G4020-SR2(CW)	C	P-SR-M-FR-SV-1oo1-S-VB	1/2" for DVC with 3/4" VB	3/4" (.065 WT)	11	7	VAVOS-PAC-SY210	VAVOS-PAC-SY210-NA	VA-ED-004-7713	236	VA-ED-004-7482	237
G4020-SR2(CW)	D	P-SR-M-FR-SV-1oo1-X-QEV	1/2" with 1/4" QEV	1/2" (.065 WT)	36	8	VAVOS-PAC-SY211	VAVOS-PAC-SY211-NA	VA-ED-004-8270	238	VA-ED-004-7988	239
G4020-SR2(CW)	D	P-SR-M-FR-SV-1oo1-X-QEV	1/2" with 1/2" QEV	3/4" (.065 WT)	23	4	VAVOS-PAC-SY212	VAVOS-PAC-SY212-NA	VA-ED-004-8248	240	VA-ED-004-8101	241

CONFIGURATION

CONTROL TYPE	A Shutdown for Small Torque Range						
	P	SR	M	FR	SV	1oo1	X X
P	Pneumatic				SV		Solenoid Valve
SR	Spring Return				1oo1		1 out of 1
M	Modular			X	X		
FR	Filter Regulator		X		X		

CONTROL TYPE	B Shutdown for Large Torque Range						
	P	SR	M	FR	SV	1oo1	X PV
P	Pneumatic				SV		Solenoid Valve
SR	Spring Return				1oo1		1 out of 1
M	Modular			X	X		
FR	Filter Regulator			PV			Pilot Valve

CONTROL TYPE	C Shutdown with Smart Positioner						
	P	SR	M	FR	SV	1oo1	SP VB
P	Pneumatic				SV		Solenoid Valve
SR	Spring Return				1oo1		1 out of 1
M	Modular				SP		Smart Positioner
FR	Filter Regulator				VB		Volume Booster

CONTROL TYPE	D Fast Shutdown through Quick Exhaust Valve						
	P	SR	M	FR	SV	1oo1	X QEV
P	Pneumatic				SV		Solenoid Valve
SR	Spring Return				1oo1		1 out of 1
M	Modular			X	X		
FR	Filter Regulator				QEV		Quick Exhaust Valve

# G-Series Spring Return (continued)

Actuator Model	Control Type	Controls Code	Modular Control System Size & Description	Tubing Size	Air Stroke (Sec)	Spring Stroke (Sec)	VOS-PAC Number (ATEX /IECEx)	VOS-PAC Number (UL/FM/CSA)	General Assembly Drawing	Page	Piping Schematic	Page
G4020-SR4(CW)	A	P-SR-M-FR-SV-1oo1-X-X	1/2"	1/2" (.065 WT)	30.5	22	VAVOS-PAC-SY213	VAVOS-PAC-SY213-NA	VA-ED-004-7931	<a href="#">242</a>	VA-ED-004-7932	<a href="#">243</a>
G4020-SR4(CW)	B	P-SR-M-FR-SV-1oo1-X-PV	1/2" Pilot Valve	3/4" (.065 WT)	10	7.5	VAVOS-PAC-SY214	VAVOS-PAC-SY214-NA	VA-ED-004-8088	<a href="#">244</a>	VA-ED-004-7945	<a href="#">245</a>
G4020-SR4(CW)	C	P-SR-M-FR-SV-1oo1-S-VB	1/2" for DVC with 3/4" VB	3/4" (.065 WT)	11	7	VAVOS-PAC-SY215	VAVOS-PAC-SY215-NA	VA-ED-004-7712	<a href="#">246</a>	VA-ED-004-7483	<a href="#">247</a>
G4020-SR4(CW)	D	P-SR-M-FR-SV-1oo1-X-QEV	1/2" WITH 1/4" QEV	1/2" (.065 WT)	36	8	VAVOS-PAC-SY216	VAVOS-PAC-SY216-NA	VA-ED-004-8284	<a href="#">248</a>	VA-ED-004-7989	<a href="#">249</a>
G4020-SR4(CW)	D	P-SR-M-FR-SV-1oo1-X-QEV	1/2" WITH 1/2" QEV	3/4" (.065 WT)	23	4	VAVOS-PAC-SY217	VAVOS-PAC-SY217-NA	VA-ED-004-8262	<a href="#">250</a>	VA-ED-004-8102	<a href="#">251</a>
G5024-SR4(CW)	B	P-SR-M-FR-SV-1oo1-X-PV	1/2" Pilot Valve	3/4" (.065 WT)	19	13.5	VAVOS-PAC-SY218	VAVOS-PAC-SY218-NA	VA-ED-004-8089	<a href="#">252</a>	VA-ED-004-7946	<a href="#">253</a>
G5024-SR4(CW)	B	P-SR-M-FR-SV-1oo1-X-PV	1" Pilot Valve	1" (.083WT)	7.5	5.5	VAVOS-PAC-SY219	VAVOS-PAC-SY219-NA	VA-ED-004-8894	<a href="#">254</a>	VA-ED-004-8129	<a href="#">255</a>
G5024-SR4(CW)	C	P-SR-M-FR-SV-1oo1-S-VB	1/2" for DVC with 3/4" VB	3/4" (.065 WT)	21	11.5	VAVOS-PAC-SY220	VAVOS-PAC-SY220-NA	VA-ED-004-7711	<a href="#">256</a>	VA-ED-004-7484	<a href="#">257</a>
G5024-SR4(CW)	C	P-SR-M-FR-SV-1oo1-S-VB	1/2" for DVC with 1" VB	1" (.083WT)	14	7	VAVOS-PAC-SY221	VAVOS-PAC-SY221-NA	VA-ED-004-7651	<a href="#">258</a>	VA-ED-004-7490	<a href="#">259</a>
G5024-SR4(CW)	D	P-SR-M-FR-SV-1oo1-X-QEV	1/2" WITH 1/2" QEV	3/4" (.065 WT)	42.5	7.5	VAVOS-PAC-SY222	VAVOS-PAC-SY222-NA	VA-ED-004-8264	<a href="#">260</a>	VA-ED-004-8103	<a href="#">261</a>
G5024-SR4(CW)	D	P-SR-M-FR-SV-1oo1-X-QEV	1/2" WITH 3/4" QEV	1" (.083WT)	40	4.5	VAVOS-PAC-SY223	VAVOS-PAC-SY223-NA	VA-ED-004-8237	<a href="#">262</a>	VA-ED-004-8107	<a href="#">263</a>
G5028-SR2(CW)	B	P-SR-M-FR-SV-1oo1-X-PV	1/2" Pilot Valve	3/4" (.065 WT)	27	19	VAVOS-PAC-SY224	VAVOS-PAC-SY224-NA	VA-ED-004-8090	<a href="#">264</a>	VA-ED-004-7947	<a href="#">265</a>
G5028-SR2(CW)	B	P-SR-M-FR-SV-1oo1-X-PV	1" Pilot Valve	1" (.083WT)	11	8	VAVOS-PAC-SY225	VAVOS-PAC-SY225-NA	VA-ED-004-8895	<a href="#">266</a>	VA-ED-004-8130	<a href="#">267</a>
G5028-SR2(CW)	C	P-SR-M-FR-SV-1oo1-S-VB	1/2" for DVC with 3/4" VB	3/4" (.065 WT)	29.5	16.5	VAVOS-PAC-SY226	VAVOS-PAC-SY226-NA	VA-ED-004-7708	<a href="#">268</a>	VA-ED-004-7485	<a href="#">269</a>
G5028-SR2(CW)	C	P-SR-M-FR-SV-1oo1-S-VB	1/2" for DVC with 1" VB	1" (.083WT)	19.5	9.5	VAVOS-PAC-SY227	VAVOS-PAC-SY227-NA	VA-ED-004-7650	<a href="#">270</a>	VA-ED-004-7491	<a href="#">271</a>
G5028-SR2(CW)	D	P-SR-M-FR-SV-1oo1-X-QEV	1/2" WITH 1/2" QEV	3/4" (.065 WT)	60	10.5	VAVOS-PAC-SY228	VAVOS-PAC-SY228-NA	VA-ED-004-8268	<a href="#">272</a>	VA-ED-004-8104	<a href="#">273</a>
G5028-SR2(CW)	D	P-SR-M-FR-SV-1oo1-X-QEV	1/2" WITH 3/4" QEV	1" (.083WT)	56.5	6	VAVOS-PAC-SY229	VAVOS-PAC-SY229-NA	VA-ED-004-8246	<a href="#">274</a>	VA-ED-004-8108	<a href="#">275</a>
G5028-SR4(CW)	B	P-SR-M-FR-SV-1oo1-X-PV	1/2" Pilot Valve	3/4" (.065 WT)	27	19	VAVOS-PAC-SY230	VAVOS-PAC-SY230-NA	VA-ED-004-8074	<a href="#">276</a>	VA-ED-004-7948	<a href="#">277</a>
G5028-SR4(CW)	B	P-SR-M-FR-SV-1oo1-X-PV	1" Pilot Valve	1" (.083WT)	11	8	VAVOS-PAC-SY231	VAVOS-PAC-SY231-NA	VA-ED-004-8896	<a href="#">278</a>	VA-ED-004-8132	<a href="#">279</a>
G5028-SR4(CW)	C	P-SR-M-FR-SV-1oo1-S-VB	1/2" for DVC with 3/4" VB	3/4" (.065 WT)	29.5	16.5	VAVOS-PAC-SY232	VAVOS-PAC-SY232-NA	VA-ED-004-7707	<a href="#">280</a>	VA-ED-004-7486	<a href="#">281</a>
G5028-SR4(CW)	C	P-SR-M-FR-SV-1oo1-S-VB	1/2" for DVC with 1" VB	1" (.083WT)	19.5	9.5	VAVOS-PAC-SY233	VAVOS-PAC-SY233-NA	VA-ED-004-7637	<a href="#">282</a>	VA-ED-004-7492	<a href="#">283</a>
G5028-SR4(CW)	D	P-SR-M-FR-SV-1oo1-X-QEV	1/2" WITH 1/2" QEV	3/4" (.065 WT)	60	10.5	VAVOS-PAC-SY234	VAVOS-PAC-SY234-NA	VA-ED-004-8273	<a href="#">284</a>	VA-ED-004-8105	<a href="#">285</a>
G5028-SR4(CW)	D	P-SR-M-FR-SV-1oo1-X-QEV	1/2" WITH 3/4" QEV	1" (.083WT)	56.5	6	VAVOS-PAC-SY235	VAVOS-PAC-SY235-NA	VA-ED-004-8250	<a href="#">286</a>	VA-ED-004-8109	<a href="#">287</a>
G7028-SR4(CW)	B	P-SR-M-FR-SV-1oo1-X-PV	1" Pilot Valve	1" (.083WT)	13.5	10	VAVOS-PAC-SY236	VAVOS-PAC-SY236-NA	VA-ED-004-8897	<a href="#">288</a>	VA-ED-004-8133	<a href="#">289</a>
G7028-SR4(CW)	C	P-SR-M-FR-SV-1oo1-S-VB	1/2" for DVC with 1" VB	1" (.083WT)	24	14.5	VAVOS-PAC-SY237	VAVOS-PAC-SY237-NA	VA-ED-004-7574	<a href="#">290</a>	VA-ED-004-7493	<a href="#">291</a>
G7028-SR4(CW)	D	P-SR-M-FR-SV-1oo1-X-QEV	1/2" WITH 3/4" QEV	1" (.083WT)	70.5	7.5	VAVOS-PAC-SY238	VAVOS-PAC-SY238-NA	VA-ED-004-8256	<a href="#">292</a>	VA-ED-004-8110	<a href="#">293</a>
G7032-SR4(CW)	B	P-SR-M-FR-SV-1oo1-X-PV	1" Pilot Valve	1" (.083WT)	16.5	12	VAVOS-PAC-SY239	VAVOS-PAC-SY239-NA	VA-ED-004-8899	<a href="#">294</a>	VA-ED-004-8134	<a href="#">295</a>
G7032-SR4(CW)	C	P-SR-M-FR-SV-1oo1-S-VB	1/2" for DVC with 1" VB	1" (.083WT)	30	14.5	VAVOS-PAC-SY240	VAVOS-PAC-SY240-NA	VA-ED-004-7635	<a href="#">296</a>	VA-ED-004-7494	<a href="#">297</a>
G7032-SR4(CW)	D	P-SR-M-FR-SV-1oo1-X-QEV	1/2" WITH 3/4" QEV	1" (.083WT)	87.5	9.5	VAVOS-PAC-SY241	VAVOS-PAC-SY241-NA	VA-ED-004-8258	<a href="#">298</a>	VA-ED-004-8111	<a href="#">299</a>
G8036-SR3(CW)	B	P-SR-M-FR-SV-1oo1-X-PV	1" Pilot Valve	1" (.083WT)	25.5	18.5	VAVOS-PAC-SY242	VAVOS-PAC-SY242-NA	VA-ED-004-8900	<a href="#">300</a>	VA-ED-004-8135	<a href="#">301</a>
G8036-SR3(CW)	C	P-SR-M-FR-SV-1oo1-S-VB	1/2" for DVC with 1" VB	1" (.083WT)	43	19.5	VAVOS-PAC-SY243	VAVOS-PAC-SY243-NA	VA-ED-004-7684	<a href="#">302</a>	VA-ED-004-7495	<a href="#">303</a>
G8036-SR3(CW)	D	P-SR-M-FR-SV-1oo1-X-QEV	1/2" WITH 3/4" QEV	1" (.083WT)	131	13.5	VAVOS-PAC-SY244	VAVOS-PAC-SY244-NA	VA-ED-004-8289	<a href="#">304</a>	VA-ED-004-8112	<a href="#">305</a>
G10040-SR4(CW)	B	P-SR-M-FR-SV-1oo1-X-PV	1" Pilot Valve	1" (.083WT)	40.5	29.5	VAVOS-PAC-SY245	VAVOS-PAC-SY245-NA	VA-ED-004-8901	<a href="#">306</a>	VA-ED-004-8136	<a href="#">307</a>
G10040-SR4(CW)	C	P-SR-M-FR-SV-1oo1-S-VB	1/2" for DVC with 1" VB	1" (.083WT)	67.5	31	VAVOS-PAC-SY246	VAVOS-PAC-SY246-NA	VA-ED-004-7691	<a href="#">308</a>	VA-ED-004-7496	<a href="#">309</a>
G10040-SR4(CW)	D	P-SR-M-FR-SV-1oo1-X-QEV	1/2" WITH 3/4" QEV	1" (.083WT)	206.5	21.5	VAVOS-PAC-SY247	VAVOS-PAC-SY247-NA	VA-ED-004-8294	<a href="#">310</a>	VA-ED-004-8113	<a href="#">311</a>

CONFIGURATION

CONTROL TYPE	A Shutdown for Small Torque Range						
	P	SR	M	FR	SV	1oo1	X X
P	Pneumatic				SV		Solenoid Valve
SR	Spring Return				1oo1		1 out of 1
M	Modular		X		X		
FR	Filter Regulator		X		X		

CONTROL TYPE	B Shutdown for Large Torque Range						
	P	SR	M	FR	SV	1oo1	X PV
P	Pneumatic				SV		Solenoid Valve
SR	Spring Return				1oo1		1 out of 1
M	Modular		X		X		
FR	Filter Regulator				PV		Pilot Valve

CONTROL TYPE	C Shutdown with Smart Positioner						
	P	SR	M	FR	SV	1oo1	SP VB
P	Pneumatic				SV		Solenoid Valve
SR	Spring Return				1oo1		1 out of 1
M	Modular				SP		Smart Positioner
FR	Filter Regulator				VB		Volume Booster

CONTROL TYPE	D Fast Shutdown through Quick Exhaust Valve						
	P	SR	M	FR	SV	1oo1	X QEV
P	Pneumatic				SV		Solenoid Valve
SR	Spring Return				1oo1		1 out of 1
M	Modular		X		X		
FR	Filter Regulator				QEV		Quick Exhaust Valve

# RPE-Series Double Acting

Actuator Model	Control Type	Controls Code	Modular Control System Size & Description	Tubing Size	Air Stroke CCW (Sec)	Air Stroke CW (Sec)	VOS-PAC Number (ATEX /IECEX)	VOS-PAC Number (UL/FM/CSA)	General Assembly Drawing	Page	Piping Schematic	Page
RPED0025-NU00CWALTN-L11SKB-00XX	I	P-DA-M-FR-SV-1oo1-X-X	1/4" F/R with SOL 4/2 WAY	NA	0.5	0.5	VAVOS-PAC-RP013	VAVOS-PAC-RP013-NA	VA-ED-004-9598	<a href="#">312</a>	VA-ED-004-9593	<a href="#">313</a>
RPED0040-NU00CWALTN-L14SKB-00XX	I	P-DA-M-FR-SV-1oo1-X-X	1/4" F/R with SOL 4/2 WAY	NA	1	1	VAVOS-PAC-RP014	VAVOS-PAC-RP014-NA	VA-ED-004-9599	<a href="#">314</a>	VA-ED-004-9594	<a href="#">315</a>
RPED0065-NU00CWALTN-L14SKB-00XX	I	P-DA-M-FR-SV-1oo1-X-X	1/4" F/R with SOL 4/2 WAY	NA	1	1	VAVOS-PAC-RP015	VAVOS-PAC-RP015-NA	VA-ED-004-9600	<a href="#">316</a>	VA-ED-004-9595	<a href="#">317</a>
RPED0100-NU00CWALTN-L19SKB-00XX	I	P-DA-M-FR-SV-1oo1-X-X	1/4" F/R with SOL 4/2 WAY	NA	1	1	VAVOS-PAC-RP016	VAVOS-PAC-RP016-NA	VA-ED-004-9601	<a href="#">318</a>	VA-ED-004-9596	<a href="#">319</a>
RPED0150-NU00CWALTN-L19SKB-00XX	I	P-DA-M-FR-SV-1oo1-X-X	1/4" F/R with SOL 4/2 WAY	NA	1.5	1	VAVOS-PAC-RP017	VAVOS-PAC-RP017-NA	VA-ED-004-9602	<a href="#">320</a>	VA-ED-004-9597	<a href="#">321</a>
RPED0200-NU00CWALTN-L22SKB-00XX	I	P-DA-M-FR-SV-1oo1-X-X	1/4" F/R with SOL 4/2 WAY	NA	1.5	1.5	VAVOS-PAC-RP018	VAVOS-PAC-RP018-NA	VA-ED-004-9604	<a href="#">322</a>	VA-ED-004-9603	<a href="#">323</a>
RPED0350-NU00CWALTN-L27SKB-00XX	I	P-DA-M-FR-SV-1oo1-X-X	1/4" F/R with SOL 4/2 WAY	NA	2	2	VAVOS-PAC-RP019	VAVOS-PAC-RP019-NA	VA-ED-004-9700	<a href="#">324</a>	VA-ED-004-9701	<a href="#">325</a>
RPED0600-NU00CWALTN-L27SKB-00XX	I	P-DA-M-FR-SV-1oo1-X-X	1/4" F/R with SOL 4/2 WAY	NA	3.5	3	VAVOS-PAC-RP020	VAVOS-PAC-RP020-NA	VA-ED-004-9702	<a href="#">326</a>	VA-ED-004-9703	<a href="#">327</a>
RPED0950-NU00CWALTN-L36SKB-00XX	I	P-DA-M-FR-SV-1oo1-X-X	1/4" F/R with SOL 4/2 WAY	NA	4.5	4	VAVOS-PAC-RP021	VAVOS-PAC-RP021-NA	VA-ED-004-9704	<a href="#">328</a>	VA-ED-004-9705	<a href="#">329</a>
RPED1600-NU00CWALTN-L46SKB-00XX	I	P-DA-M-FR-SV-1oo1-X-X	1/4" F/R with SOL 4/2 WAY	NA	7	6	VAVOS-PAC-RP022	VAVOS-PAC-RP022-NA	VA-ED-004-9706	<a href="#">330</a>	VA-ED-004-9707	<a href="#">331</a>
RPED2500-NU00CWALTN-L46SKB-00XX	I	P-DA-M-FR-SV-1oo1-X-X	1/4" F/R with SOL 4/2 WAY	NA	9	9.5	VAVOS-PAC-RP023	VAVOS-PAC-RP023-NA	VA-ED-004-9708	<a href="#">332</a>	VA-ED-004-9709	<a href="#">333</a>
RPED4000-NU00CWALTN-Q55SKB-00XX	I	P-DA-M-FR-SV-1oo1-X-X	1/4" F/R with SOL 4/2 WAY	NA	16	16	VAVOS-PAC-RP024	VAVOS-PAC-RP024-NA	VA-ED-004-9710	<a href="#">334</a>	VA-ED-004-9711	<a href="#">335</a>

CONFIGURATION

CONTROL TYPE	I	Shutdown					
P	DA	M	FR	SV	1oo1	X	X
P	Pneumatic			SV	Solenoid Valve		
SR	Double Acting			1oo1	1 out of 1		
M	Modular			X	X		
FR	Filter Regulator			X	X		

# RPE-Series Double Acting

Actuator Model	Control Type	Controls Code	Modular Control System Size & Description	Tubing Size	Air Stroke CCW (Sec)	Air Stroke CW (Sec)	VOS-PAC Number (ATEX /IECEX)	VOS-PAC Number (UL/FM/CSA)	General Assembly Drawing	Page	Piping Schematic	Page
RPED0025-NU00CWALTN-L11SKB-00XX	I	P-DA-M-FR-SV-1oo1-X-X	1/4" F/R with SOL 4/2 WAY	NA	0.5	0.5	VAVOS-PAC-RP037	VAVOS-PAC-RP037-NA	VA-ED-004-9598	<a href="#">312</a>	VA-ED-004-9593	<a href="#">313</a>
RPED0040-NU00CWALTN-L14SKB-00XX	I	P-DA-M-FR-SV-1oo1-X-X	1/4" F/R with SOL 4/2 WAY	NA	1	1	VAVOS-PAC-RP038	VAVOS-PAC-RP038-NA	VA-ED-004-9599	<a href="#">314</a>	VA-ED-004-9594	<a href="#">315</a>
RPED0065-NU00CWALTN-L14SKB-00XX	I	P-DA-M-FR-SV-1oo1-X-X	1/4" F/R with SOL 4/2 WAY	NA	1	1	VAVOS-PAC-RP039	VAVOS-PAC-RP039-NA	VA-ED-004-9600	<a href="#">316</a>	VA-ED-004-9595	<a href="#">317</a>
RPED0100-NU00CWALTN-L19SKB-00XX	I	P-DA-M-FR-SV-1oo1-X-X	1/4" F/R with SOL 4/2 WAY	NA	1	1	VAVOS-PAC-RP040	VAVOS-PAC-RP040-NA	VA-ED-004-9601	<a href="#">318</a>	VA-ED-004-9596	<a href="#">319</a>
RPED0150-NU00CWALTN-L19SKB-00XX	I	P-DA-M-FR-SV-1oo1-X-X	1/4" F/R with SOL 4/2 WAY	NA	1.5	1	VAVOS-PAC-RP041	VAVOS-PAC-RP041-NA	VA-ED-004-9602	<a href="#">320</a>	VA-ED-004-9597	<a href="#">321</a>
RPED0200-NU00CWALTN-L22SKB-00XX	I	P-DA-M-FR-SV-1oo1-X-X	1/4" F/R with SOL 4/2 WAY	NA	1.5	1.5	VAVOS-PAC-RP042	VAVOS-PAC-RP042-NA	VA-ED-004-9604	<a href="#">322</a>	VA-ED-004-9603	<a href="#">323</a>
RPED0350-NU00CWALTN-L27SKB-00XX	I	P-DA-M-FR-SV-1oo1-X-X	1/4" F/R with SOL 4/2 WAY	NA	2	2	VAVOS-PAC-RP043	VAVOS-PAC-RP043-NA	VA-ED-004-9700	<a href="#">324</a>	VA-ED-004-9701	<a href="#">325</a>
RPED0600-NU00CWALTN-L27SKB-00XX	I	P-DA-M-FR-SV-1oo1-X-X	1/4" F/R with SOL 4/2 WAY	NA	3.5	3.5	VAVOS-PAC-RP044	VAVOS-PAC-RP044-NA	VA-ED-004-9702	<a href="#">326</a>	VA-ED-004-9703	<a href="#">327</a>
RPED0950-NU00CWALTN-L36SKB-00XX	I	P-DA-M-FR-SV-1oo1-X-X	1/4" F/R with SOL 4/2 WAY	NA	5	4.5	VAVOS-PAC-RP045	VAVOS-PAC-RP045-NA	VA-ED-004-9704	<a href="#">328</a>	VA-ED-004-9705	<a href="#">329</a>
RPED1600-NU00CWALTN-L46SKB-00XX	I	P-DA-M-FR-SV-1oo1-X-X	1/4" F/R with SOL 4/2 WAY	NA	7.5	7	VAVOS-PAC-RP046	VAVOS-PAC-RP046-NA	VA-ED-004-9706	<a href="#">330</a>	VA-ED-004-9707	<a href="#">331</a>
RPED2500-NU00CWALTN-L46SKB-00XX	I	P-DA-M-FR-SV-1oo1-X-X	1/4" F/R with SOL 4/2 WAY	NA	10	10.5	VAVOS-PAC-RP047	VAVOS-PAC-RP047-NA	VA-ED-004-9708	<a href="#">332</a>	VA-ED-004-9709	<a href="#">333</a>
RPED4000-NU00CWALTN-Q55SKB-00XX	I	P-DA-M-FR-SV-1oo1-X-X	1/4" F/R with SOL 4/2 WAY	NA	17.5	18	VAVOS-PAC-RP048	VAVOS-PAC-RP048-NA	VA-ED-004-9710	<a href="#">334</a>	VA-ED-004-9711	<a href="#">335</a>

CONFIGURATION

CONTROL TYPE	I	Shutdown					
P	DA	M	FR	SV	1oo1	X	X
P	Pneumatic			SV	Solenoid Valve		
SR	Double Acting			1oo1	1 out of 1		
M	Modular			X	X		
FR	Filter Regulator			X	X		



# RPE-Series Spring Return

Actuator Model	Control Type	Controls Code	Modular Control System Size & Description	Tubing Size	Air Stroke (Sec)	Spring Stroke (Sec)	VOS-PAC Number (ATEX /IECEX)	VOS-PAC Number (UL/FM/CSA)	General Assembly Drawing	Page	Piping Schematic	Page
RPES0025-NU30CWALTN-L11SKB-00XX	G	P-SR-M-FR-SV-1001-X-X	1/4" F/R with SOL 3/2 WAY	NA	0.5	0.5	VAVOS-PAC-RP001	VAVOS-PAC-RP001-NA	VA-ED-004-9423	<a href="#">336</a>	VA-ED-004-9409	<a href="#">337</a>
RPES0040-NU30CWALTN-L14SKB-00XX	G	P-SR-M-FR-SV-1001-X-X	1/4" F/R with SOL 3/2 WAY	NA	1	1	VAVOS-PAC-RP002	VAVOS-PAC-RP002-NA	VA-ED-004-9424	<a href="#">338</a>	VA-ED-004-9410	<a href="#">339</a>
RPES0065-NU30CWALTN-L14SKB-00XX	G	P-SR-M-FR-SV-1001-X-X	1/4" F/R with SOL 3/2 WAY	NA	1	1	VAVOS-PAC-RP003	VAVOS-PAC-RP003-NA	VA-ED-004-9425	<a href="#">340</a>	VA-ED-004-9411	<a href="#">341</a>
RPES0100-NU30CWALTN-L19SKB-00XX	G	P-SR-M-FR-SV-1001-X-X	1/4" F/R with SOL 3/2 WAY	NA	1	1	VAVOS-PAC-RP004	VAVOS-PAC-RP004-NA	VA-ED-004-9426	<a href="#">342</a>	VA-ED-004-9412	<a href="#">343</a>
RPES0150-NU30CWALTN-L19SKB-00XX	G	P-SR-M-FR-SV-1001-X-X	1/4" F/R with SOL 3/2 WAY	NA	1	1	VAVOS-PAC-RP005	VAVOS-PAC-RP005-NA	VA-ED-004-9427	<a href="#">344</a>	VA-ED-004-9415	<a href="#">345</a>
RPES0200-NU30CWALTN-L22SKB-00XX	G	P-SR-M-FR-SV-1001-X-X	1/4" F/R with SOL 3/2 WAY	NA	2	1.5	VAVOS-PAC-RP006	VAVOS-PAC-RP006-NA	VA-ED-004-9428	<a href="#">346</a>	VA-ED-004-9416	<a href="#">347</a>
RPES0350-NU30CWALTN-L27SKB-00XX	H	P-SR-M-FR-SV-1001-X-BB	1/4" F/R with SOL 3/2 WAY	NA	2.5	2	VAVOS-PAC-RP007	VAVOS-PAC-RP007-NA	VA-ED-004-9429	<a href="#">348</a>	VA-ED-004-9417	<a href="#">349</a>
RPES0600-NU30CWALTN-L27SKB-00XX	H	P-SR-M-FR-SV-1001-X-BB	1/4" F/R with SOL 3/2 WAY	NA	4.5	1.5	VAVOS-PAC-RP008	VAVOS-PAC-RP008-NA	VA-ED-004-9430	<a href="#">350</a>	VA-ED-004-9418	<a href="#">351</a>
RPES0950-NU30CWALTN-L36SKB-00XX	H	P-SR-M-FR-SV-1001-X-BB	1/4" F/R with SOL 3/2 WAY	NA	7.5	2	VAVOS-PAC-RP009	VAVOS-PAC-RP009-NA	VA-ED-004-9431	<a href="#">352</a>	VA-ED-004-9419	<a href="#">353</a>
RPES1600-NU30CWALTN-L46SKB-00XX	H	P-SR-M-FR-SV-1001-X-BB	1/4" F/R with SOL 3/2 WAY	NA	12.5	3	VAVOS-PAC-RP010	VAVOS-PAC-RP010-NA	VA-ED-004-9432	<a href="#">354</a>	VA-ED-004-9420	<a href="#">355</a>
RPES2500-NU30CWALTN-L46SKB-00XX	H	P-SR-M-FR-SV-1001-X-BB	1/4" F/R with SOL 3/2 WAY	NA	20	3.5	VAVOS-PAC-RP011	VAVOS-PAC-RP011-NA	VA-ED-004-9434	<a href="#">356</a>	VA-ED-004-9421	<a href="#">357</a>
RPES4000-NU30CWALTN-Q55SKB-00XX	H	P-SR-M-FR-SV-1001-X-BB	1/4" F/R with SOL 3/2 WAY	NA	32	6	VAVOS-PAC-RP012	VAVOS-PAC-RP012-NA	VA-ED-004-9435	<a href="#">358</a>	VA-ED-004-9422	<a href="#">359</a>

CONFIGURATION

CONTROL TYPE		G Shutdown for Small Torque Range					
P	SR	M	FR	SV	1oo1	X	X
P	Pneumatic			SV			Solenoid Valve
SR	Spring Return			1oo1			1 out of 1
M	Modular			X			X
FR	Filter Regulator			X			X

CONTROL TYPE		H Shutdown for Large Torque Range					
P	SR	M	FR	SV	1oo1	X	BB
P	Pneumatic			SV			Solenoid Valve
SR	Spring Return			1oo1			1 out of 1
M	Modular			X			X
FR	Filter Regulator			BB			Breather Block

Actuator Model	Control Type	Controls Code	Modular Control System Size & Description	Tubing Size	Air Stroke (Sec)	Spring Stroke (Sec)	VOS-PAC Number (ATEX /IECEX)	VOS-PAC Number (UL/FM/CSA)	General Assembly Drawing	Page	Piping Schematic	Page
RPES0025-NU30CWALTN-L11SKB-00XX	G	P-SR-M-FR-SV-1001-X-X	1/4" F/R with SOL 3/2 WAY	NA	0.5	0.5	VAVOS-PAC-RP025	VAVOS-PAC-RP025-NA	VA-ED-004-9423	<a href="#">336</a>	VA-ED-004-9409	<a href="#">337</a>
RPES0040-NU30CWALTN-L14SKB-00XX	G	P-SR-M-FR-SV-1001-X-X	1/4" F/R with SOL 3/2 WAY	NA	1	1	VAVOS-PAC-RP026	VAVOS-PAC-RP026-NA	VA-ED-004-9424	<a href="#">338</a>	VA-ED-004-9410	<a href="#">339</a>
RPES0065-NU30CWALTN-L14SKB-00XX	G	P-SR-M-FR-SV-1001-X-X	1/4" F/R with SOL 3/2 WAY	NA	1	1	VAVOS-PAC-RP027	VAVOS-PAC-RP027-NA	VA-ED-004-9425	<a href="#">340</a>	VA-ED-004-9411	<a href="#">341</a>
RPES0100-NU30CWALTN-L19SKB-00XX	G	P-SR-M-FR-SV-1001-X-X	1/4" F/R with SOL 3/2 WAY	NA	1	1	VAVOS-PAC-RP028	VAVOS-PAC-RP028-NA	VA-ED-004-9426	<a href="#">342</a>	VA-ED-004-9412	<a href="#">343</a>
RPES0150-NU30CWALTN-L19SKB-00XX	G	P-SR-M-FR-SV-1001-X-X	1/4" F/R with SOL 3/2 WAY	NA	1.5	1	VAVOS-PAC-RP029	VAVOS-PAC-RP029-NA	VA-ED-004-9427	<a href="#">344</a>	VA-ED-004-9415	<a href="#">345</a>
RPES0200-NU30CWALTN-L22SKB-00XX	G	P-SR-M-FR-SV-1001-X-X	1/4" F/R with SOL 3/2 WAY	NA	2	1.5	VAVOS-PAC-RP030	VAVOS-PAC-RP030-NA	VA-ED-004-9428	<a href="#">346</a>	VA-ED-004-9416	<a href="#">347</a>
RPES0350-NU30CWALTN-L27SKB-00XX	H	P-SR-M-FR-SV-1001-X-BB	1/4" F/R with SOL 3/2 WAY	NA	2.5	2	VAVOS-PAC-RP031	VAVOS-PAC-RP031-NA	VA-ED-004-9429	<a href="#">348</a>	VA-ED-004-9417	<a href="#">349</a>
RPES0600-NU30CWALTN-L27SKB-00XX	H	P-SR-M-FR-SV-1001-X-BB	1/4" F/R with SOL 3/2 WAY	NA	5	1.5	VAVOS-PAC-RP032	VAVOS-PAC-RP032-NA	VA-ED-004-9430	<a href="#">350</a>	VA-ED-004-9418	<a href="#">351</a>
RPES0950-NU30CWALTN-L36SKB-00XX	H	P-SR-M-FR-SV-1001-X-BB	1/4" F/R with SOL 3/2 WAY	NA	7.5	2	VAVOS-PAC-RP033	VAVOS-PAC-RP033-NA	VA-ED-004-9431	<a href="#">352</a>	VA-ED-004-9419	<a href="#">353</a>
RPES1600-NU30CWALTN-L46SKB-00XX	H	P-SR-M-FR-SV-1001-X-BB	1/4" F/R with SOL 3/2 WAY	NA	12.5	3	VAVOS-PAC-RP034	VAVOS-PAC-RP034-NA	VA-ED-004-9432	<a href="#">354</a>	VA-ED-004-9420	<a href="#">355</a>
RPES2500-NU30CWALTN-L46SKB-00XX	H	P-SR-M-FR-SV-1001-X-BB	1/4" F/R with SOL 3/2 WAY	NA	20	3.5	VAVOS-PAC-RP035	VAVOS-PAC-RP035-NA	VA-ED-004-9434	<a href="#">356</a>	VA-ED-004-9421	<a href="#">357</a>
RPES4000-NU30CWALTN-Q55SKB-00XX	H	P-SR-M-FR-SV-1001-X-BB	1/4" F/R with SOL 3/2 WAY	NA	32	6	VAVOS-PAC-RP036	VAVOS-PAC-RP036-NA	VA-ED-004-9435	<a href="#">358</a>	VA-ED-004-9422	<a href="#">359</a>

CONFIGURATION

CONTROL TYPE		G Shutdown for Small Torque Range						
P	SR	M	FR	SV	1oo1	X	X	
P	Pneumatic			SV	Solenoid Valve			
SR	Spring Return			1oo1	1 out of 1			
M	Modular		X	X				
FR	Filter Regulator		X	X				

CONTROL TYPE		H Shutdown for Large Torque Range						
P	SR	M	FR	SV	1oo1	X	BB	
P	Pneumatic			SV	Solenoid Valve			
SR	Spring Return			1oo1	1 out of 1			
M	Modular		X	X				
FR	Filter Regulator		BB	Breather Block				

# SECTION 3

Components and Dimensions

# Complete Emerson Solution

All components are designed, engineered and guaranteed by Emerson.

## VOS-PAC Electrical Control Component Details:

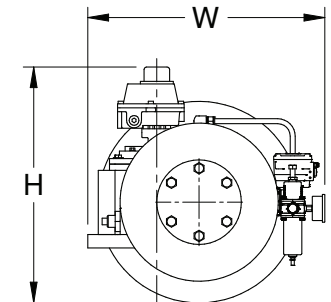
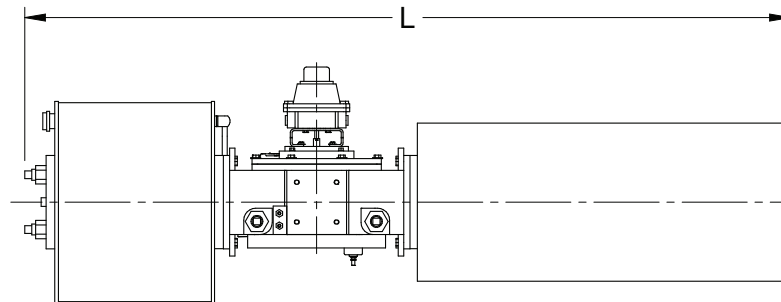
Valve Type	Model	Operator Ambient Temp.	Material	Conduit Connection	Area Code	Power	Voltage	Approval
Solenoid Valve	ASCO, WSNFET8327B102	-60 °C to +60 °C	316SS	M20	II 2G Ex d IIC Gb, II 2D Ex tb IIIC Db IP66/67	3.6W	24 VDC	ATEX / IECEx
Solenoid Valve	ASCO, WSNFET8327A608	-60 °C to +60 °C	316SS	M20	II 2G Ex d IIC Gb, II 2D Ex tb IIIC Db IP66/67	10W	24 VDC	ATEX / IECEx
Solenoid Valve	ASCO, WSNFET8551A321	-40 °C to +80 °C	316SS	M20	II2G Ex d IIC Gb T6/T5, II2D Ex tb IIIC Db	2W	24 VDC	ATEX / IECEx
Solenoid Valve	ASCO, WSNFET8553A321	-40 °C to +80 °C	316SS	M20	II2G Ex d IIC Gb T6/T5, II2D Ex tb IIIC Db	2W	24 VDC	ATEX / IECEx
Solenoid Valve Namur	ASCO, WSNFET8327B105	-60 °C to +60 °C	316SS	M20	II2G Ex d IIC Gb T6, II2D Ex tb IIIC Db	3.6W	24 VDC	ATEX / IECEx
Solenoid Valve Namur	ASCO, WSNFET8551A309	-40 °C to +80 °C	316SS	M20	II2G Ex d IIC Gb T6/T5, II2D Ex tb IIIC Db	2W	24 VDC	ATEX / IECEx
Limit Switch	TOPWORX, DXP-L21GSMB/DXP-L21GNMB	-50 °C to 80 °C	AL	M20	Ex d IIB + H2 T6/T5/T4/T3 Gb; -50 °C ≤ Ta ≤ 60 °C/75 °C/110 °C/175 °C, IP66/67	3A	24 VDC	ATEX / IECEx
Valve Positioner	FISHER DVC6200, HART	-52 °C to +85 °C	AL	M20	EXD/EXI/SIS	4-20mA	24 VDC	IECEx
Solenoid Valve	EVHTL8327H302	(-40°C to 80°C)	Body 316SS/ Enclosure Epoxy encapsulated	1/2" with 72" Lead Wire	Class 1 Division 1, NEMA 7 & 9	2.7W	24 VDC	UL & CSA
Solenoid Valve	8362A301H883CF1	(-40°C to 60°C)	Body 316SS/ Enclosure Epoxy encapsulated	1/2" with 72" Lead Wire	Class 1 Division 1, NEMA 7 & 9	1.4W	24 VDC	UL & CSA
Solenoid Valve	8562A101H8C3CF1	(-40°C to 60°C)	Body 316SS/ Enclosure Epoxy encapsulated	1/2" with 72" Lead Wire	Class 1 Division 1, NEMA 7 & 9	1.4W	24 VDC	UL & CSA
Solenoid Valve	8562A301H8C3CF1	(-40°C to 60°C)	Body 316SS/ Enclosure Epoxy encapsulated	1/2" with 72" Lead Wire	Class 1 Division 1, NEMA 7 & 9	1.4W	24 VDC	UL & CSA
Solenoid Valve	EVL8551G309	(-40°C to 60°C)	Body 316SS/ Enclosure Epoxy encapsulated	1/2" with 72" Lead Wire	Class 1 Division 1, NEMA 7 & 9	1.4W	24 VDC	UL & CSA
Solenoid Valve	EVHTL8327H305	(-40°C to 80°C)	Body 316SS/ Enclosure Epoxy encapsulated	1/2" with 72" Lead Wire	Class 1 Division 1, NEMA 7 & 9	2.7W	24 VDC	UL & CSA
Limit Switch	TOPWORX, DXP-L21GS4B/DXP-L21GN4B	(-50 °C to 60 °C)	AL	2 off 3/4" & 2 off 1/2"	Class 1 Division 1, Groups C-D; Class 1 Division 2, Groups A-D;	3A	24 VDC	UL
Valve Positioner	FISHER DVC6200, HART	-52 °C to +85 °C	AL	1/2"	EXD/EXI/SIS	4-20mA	24 VDC	FM

**Note:** Configurations can be subjected to some late customization depending on project needs

# Envelope Dimensions and Weights - Scotch Yoke VOS-PAC

Spring Return Actuator Model	Maximum Dimensions in (mm)			Weight lbs (kgs)
	L	W	H	
CBB315-SR60 (CW)	26(661)	17.5(445)	17.5(445)	76(35)
CBB415-SR60 (CW)	26(661)	17.5(445)	17.5(445)	82(37)
CBB420-SR60 (CW)	30.5(775)	17.5(445)	17.5(445)	86(39)
CBB520-SR60 (CW)	30.5(775)	17.5(445)	17.5(445)	100(45)
CBB525-SR60 (CW)	33.5(851)	17.5(445)	18.5(470)	115(52)
CBB725-SR60 (CW)	33.5(851)	17.5(445)	18.5(470)	147(67)
CBA730-SR60 (CW)	36(915)	19.5(496)	20(508)	192(87)
CBA930-SR60 (CW)	36(915)	19.5(496)	20(508)	229(104)
G01009-SR4 (CW)	54.5(1385)	19(483)	19(483)	353(160)
G01010-SR4 (CW)	54.5(1385)	19(483)	19.5(496)	365(166)
G01012-SR4 (CW)	54.5(1385)	19(483)	20.5(521)	370(168)
G2014-SR4 (CW)	60(1524)	21(534)	22.5(572)	490(222)
G3016-SR2 (CW)	66.5(1690)	23.5(597)	24(610)	696(316)
G3016-SR4 (CW)	66.5(1690)	23.5(597)	24(610)	700(318)
G4020-SR2 (CW)	77(1956)	26(661)	28(712)	1150(522)
G4020-SR4 (CW)	77(1956)	26(661)	28(712)	1075(488)
G5024-SR4 (CW)	90(2286)	31(788)	32.5(826)	1895(860)
G5028-SR2 (CW)	90(2286)	31.5(801)	37.5(953)	2189(993)
G5028-SR4 (CW)	90(2286)	31.5(801)	37.5(953)	2150(975)
G7028-SR4 (CW)	107(2718)	35(889)	35(889)	3489(1583)
G7032-SR4 (CW)	107(2718)	35.5(902)	37(940)	3780(1715)
G8036-SR3 (CW)	141.5(3595)	39.5(1004)	41(1042)	6210(2817)
G10040-SR4 (CW)	171(4344)	47(1194)	44(1118)	8400(3810)

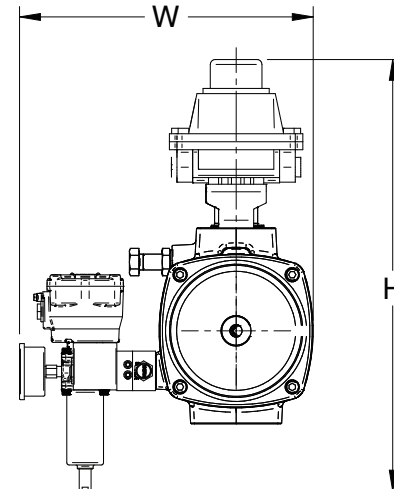
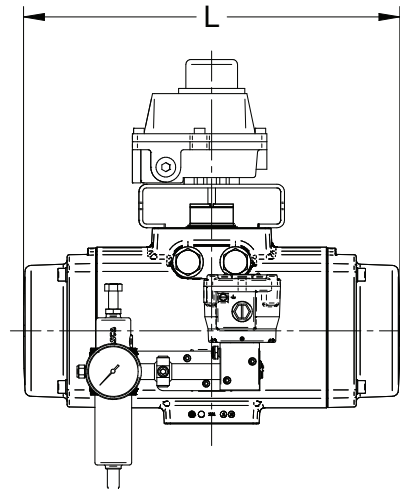
Double Acting Actuator Model	Maximum Dimensions in (mm)			Weight lbs (kgs)
	L	W	H	
CBB315	19.5(496)	15.5(394)	16(407)	58(26)
CBB420	21.5(547)	16.5(420)	16.5(420)	70(32)
CBB525	23.5(597)	17.5(445)	17(432)	95(43)
CBB725	24(610)	17.5(445)	17(432)	110(50)
CBA730	28(712)	19.5(496)	18.5(470)	160(73)
G01010	26(661)	19(483)	18(458)	203(92)
G2012	28(712)	20.5(521)	19(483)	241(109)
G3014	32.5(826)	23.5(597)	20(508)	321(146)
G3016	32.5(826)	23.5(597)	21(534)	374(170)
G4016	39.5(1004)	26(661)	22(559)	500(227)
G4020	39.5(1004)	26(661)	24.5(623)	600(272)
G5020	48(1220)	32(813)	25.5(648)	933(423)
G5024	48.5(1232)	32(813)	27.5(699)	1043(473)
G5028	48(1220)	32(813)	30(762)	1217(552)
G7028	60(1524)	36(915)	31(788)	1900(862)
G8036	69(1753)	39.5(1004)	37.5(953)	3341(1516)
G8040	68.5(1740)	41.5(1055)	41.5(1055)	3604(1635)
G10040	85(2159)	47(1194)	41.5(1055)	4824(2188)



# Envelope Dimensions and Weights - Rack and Pinion VOS-PAC

Double Acting Actuator Model	Maximum Dimensions in (mm)			Weight lbs (kgs)
	L	W	H	
RPED0025-NU00CWALTN-L11SKB-00XX	10(254)	12.5(318)	16.5(420)	42(19)
RPED0040-NU00CWALTN-L14SKB-00XX	10(254)	13(331)	17(432)	43(20)
RPED0065-NU00CWALTN-L14SKB-00XX	10.5(267)	13(331)	17.5(445)	45(21)
RPED0100-NU00CWALTN-L19SKB-00XX	10(254)	13.5(343)	18(458)	46(21)
RPED0150-NU00CWALTN-L19SKB-00XX	10.5(267)	13.5(343)	18.5(470)	49(22)
RPED0200-NU00CWALTN-L22SKB-00XX	11(280)	13.5(343)	18.5(470)	52(24)
RPED0350-NU00CWALTN-L27SKB-00XX	12(305)	15.5(394)	20(508)	67(30)
RPED0600-NU00CWALTN-L27SKB-00XX	14.5(369)	16(407)	22(559)	89(40)
RPED0950-NU00CWALTN-L36SKB-00XX	16(407)	18(458)	20.5(521)	105(48)
RPED1600-NU00CWALTN-L46SKB-00XX	18.5(470)	20(508)	21(534)	140(64)
RPED2500-NU00CWALTN-L46SKB-00XX	22(559)	21.5(547)	22.5(572)	171(78)
RPED4000-NU00CWALTN-Q55SKB-00XX	26(661)	23.5(597)	24(610)	237(108)

Spring Return Actuator Model	Maximum Dimensions in (mm)			Weight lbs (kgs)
	L	W	H	
RPES0025-NU30CWALTN-L11SKB-00XX	10.5(267)	11(280)	16.5(420)	42(19)
RPES0040-NU30CWALTN-L14SKB-00XX	10.5(267)	11.5(293)	17.5(445)	43(20)
RPES0065-NU30CWALTN-L14SKB-00XX	10.5(267)	11.5(293)	17.5(445)	45(21)
RPES0100-NU30CWALTN-L19SKB-00XX	10.5(267)	11.5(293)	18(458)	48(22)
RPES0150-NU30CWALTN-L19SKB-00XX	12(305)	12(305)	18.5(470)	53(24)
RPES0200-NU30CWALTN-L22SKB-00XX	14.5(369)	12(305)	18.5(470)	56(26)
RPES0350-NU30CWALTN-L27SKB-00XX	15.5(394)	13.5(343)	20(508)	70(32)
RPES0600-NU30CWALTN-L27SKB-00XX	19(483)	15(381)	22(559)	95(43)
RPES0950-NU30CWALTN-L36SKB-00XX	26(661)	17(432)	20.5(521)	124(56)
RPES1600-NU30CWALTN-L46SKB-00XX	29(737)	19(483)	21(534)	184(84)
RPES2500-NU30CWALTN-L46SKB-00XX	34.5(877)	20.5(521)	2.5(64)	232(105)
RPES4000-NU30CWALTN-Q55SKB-00XX	38(966)	22.5(572)	24(610)	329(149)



**World Area Configuration Centers (WACC) offer sales support, service, inventory and commissioning to our global customers. Choose the WACC or sales office nearest you:**

***NORTH & SOUTH AMERICA***

19200 Northwest Freeway  
Houston TX 77065  
USA  
T +1 281 477 4100

Av. Hollingsworth  
325 Iporanga Sorocaba  
SP 18087-105  
Brazil  
T +55 15 3413 8888

***ASIA PACIFIC***

No. 9 Gul Road  
#01-02 Singapore 629361  
T +65 6777 8211

No. 1 Lai Yuan Road  
Wuqing Development Area  
Tianjin 301700  
P. R. China  
T +86 22 8212 3300

***MIDDLE EAST & AFRICA***

P. O. Box 17033  
Jebel Ali Free Zone  
Dubai  
T +971 4 811 8100

P. O. Box 10305  
Jubail 31961  
Saudi Arabia  
T +966 3 340 8650

24 Angus Crescent  
Longmeadow Business Estate East  
P.O. Box 6908 Greenstone  
1616 Modderfontein Extension 5  
South Africa  
T +27 11 451 3700

***EUROPE***

Holland Fasor 6  
Székesfehérvár 8000  
Hungary  
T +36 22 53 09 50

Strada Biffi 165  
29017 Fiorenzuola d'Arda (PC)  
Italy  
T +39 0523 944 411

[www.emerson.com/VOSbyBettis](http://www.emerson.com/VOSbyBettis)

For complete list of sales and manufacturing sites, please visit [www.emerson.com/actuationtechnologieslocations](http://www.emerson.com/actuationtechnologieslocations) or contact us at [info.actuationtechnologies@emerson.com](mailto:info.actuationtechnologies@emerson.com)

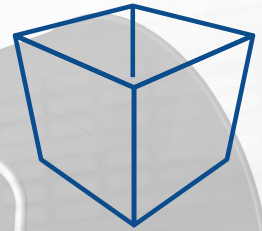
©2018 Emerson. All rights reserved.

The Emerson logo is a trademark and service mark of Emerson Electric Co. Bettis™ is a mark of the Emerson family of companies. All other marks are property of their respective owners.



# Bettis™ VOS-PAC

## Cataloged Actuation Package



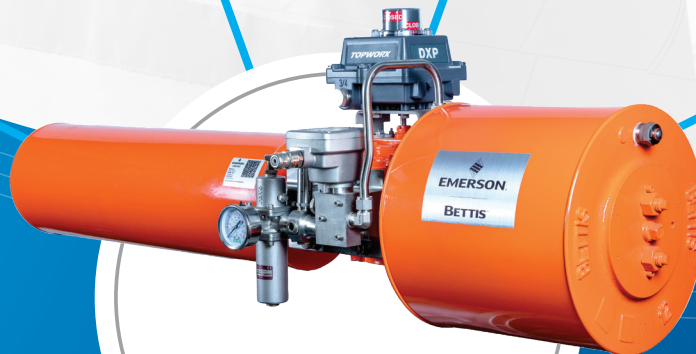
VOS-PAC



Pre-Engineered,  
Instant Pricing  
available via  
Online Sizing  
& Selection Tool.



*Engineered* by Bettis™  
*Built and Tested* by Bettis™  
*Backed* by Bettis™



- Instant Pricing
- Preset, Pre-Designed, Pre-Engineered
- Modular Control
- 24/7 Online Databook
- Shorter Lead Time

BETTIS™

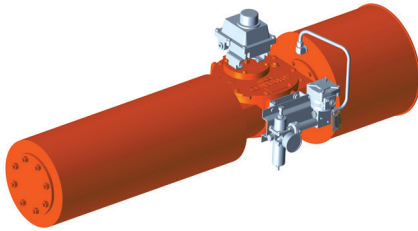
  
EMERSON™



## Cataloged VOS Solution

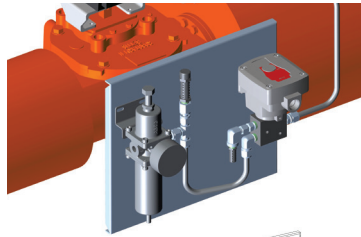


**VOS™**  
Valve Operating System

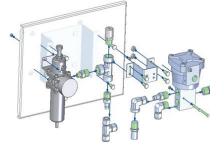


## Modular Control Systems

### Engineer-to-Order (ETO)

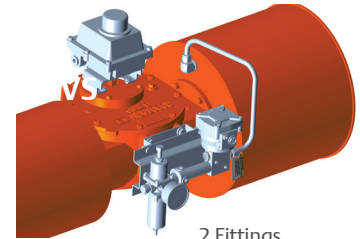


8 Fittings  
3 Tubes  
2 Accessory Brackets  
16 Fasteners  
1 Panel



**VS**

### Bettis VOS-PAC



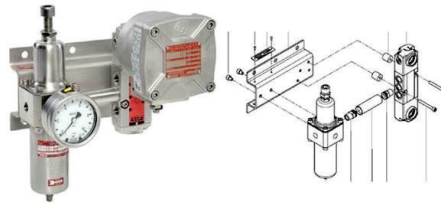
2 Fittings  
2 Tubes  
4 Fasteners

## Benefits of Modular Design

- Pre-engineered solution
- Single supplier to manager; 3-4 week lead time for entire controls
- Pre-assembled, ready-to-use system results in reduced labor costs
- Elimination of fittings and tubing within the control system
- Optimized flow path, better stroking times
- Optimization of mounting panel and kits

## True Modular Control System

Every part can be disassembled and replaced easily by taking off for maintenance and repairs.



## Specifications

**Supply Media:**  
Instrument Air

**Supply Pressure Range:**  
60 to 120 psig

**Actuator Sizing Pressure:**  
60 psig or 80 psig

**Standard Operating Temp. Range:**  
-25°C to +60°C

(\*Optional high or low temperature trims available. Consult factory.)

## Control Type Configurations

SCOTCH YOKE

**CONTROL TYPE A** Spring Return - Shutdown for Small Torque Range

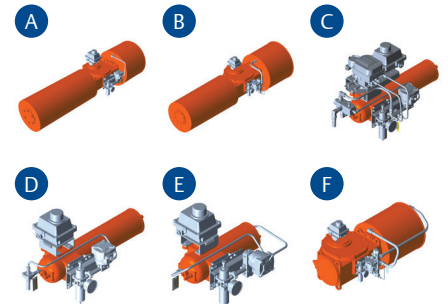
**CONTROL TYPE B** Spring Return - Shutdown for Large Torque Range

**CONTROL TYPE C** Spring Return - Shutdown with Smart Positioner

**CONTROL TYPE D** Spring Return - Fast Shutdown through Quick Exhaust Valve

**CONTROL TYPE E** Double Acting - Shutdown for Small Torque

**CONTROL TYPE F** Double Acting - Shutdown for Large Torque

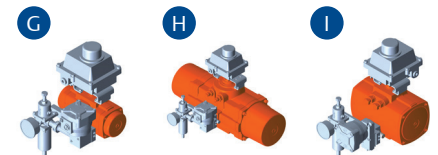


RACK & PINION

**CONTROL TYPE G** Spring Return - Shutdown for Small Torque Range

**CONTROL TYPE H** Spring Return - Shutdown for Large Torque Range

**CONTROL TYPE I** Double Acting - Shutdown



For additional VOS-PAC configurations, consult factory.

Contact us at [marketing.actuationtechnologies@emerson.com](mailto:marketing.actuationtechnologies@emerson.com)



[www.globalsupplyline.com.au](http://www.globalsupplyline.com.au)

Global Supply Line are Bettis resellers and stockists. We are an approved Emerson Actuator distributor.

We can supply/ quote complete actuator packages for emergency supply within Australia, New Zealand, Papua New Guinea and all overseas locations from our Adelaide Emerson Approved Automation Centre. [Click here](#) for our full on line stock list.

**BETTIS™**

**EMERSON™**